

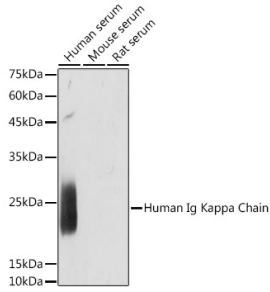
## Anti-Kappa light chain Antibody [ARC2247] (A308577)

### Specifications:

Name:	Anti-Kappa light chain Antibody [ARC2247]
Description:	Rabbit monoclonal [ARC2247] antibody to Kappa light chain.
Applications:	WB
Recommended Dilutions:	WB: 1:500-1:1,000
Reactivity:	Human, Mouse, Rat
Immunogen:	Recombinant fusion protein containing a sequence corresponding to amino acids 1-107 of human Ig Kappa Chain (P01834).
Sequence:	RTVAAPSVFIFPPSDEQLKSGTASVCLLNNFYPRQAKVQWVKVDNALQSGNSQESVTE QDSKSTYLSSTLTLSKADYEKHKVYACEVTHQGLSSPVTKSFNRGEC
Host:	Rabbit
Clonality:	Monoclonal
Clone ID:	ARC2247
Isotype:	IgG
Conjugate:	Unconjugated
Purification:	Affinity purification.
Molecular Weight:	25 kDa
Product Form:	Liquid
Formulation:	Supplied in Phosphate Buffered Saline, pH 7.3, with 50% Glycerol, 0.05% BSA, and 0.02% Sodium Azide.
Storage:	Shipped at 4°C. Upon delivery aliquot and store at -20°C. Avoid freeze / thaw cycles.
Disclaimer:	This product is for research use only. It is not intended for diagnostic or therapeutic use.

## Anti-Kappa light chain Antibody [ARC2247] (A308577)

### Images:



Western blot analysis of extracts of various cell lines, using Anti-Kappa light chain Antibody [ARC2247] (A308577) at 1:1,000 dilution. The secondary antibody was Goat Anti-Rabbit IgG H&L Antibody (HRP) at 1:10,000 dilution. Lysates/proteins were present at 25 $\mu$ g per lane. The blocking buffer used was 3% non-fat dry milk in TBST. Detection was with a ECL Enhanced Kit (RM00021). Exposure time: 1s.