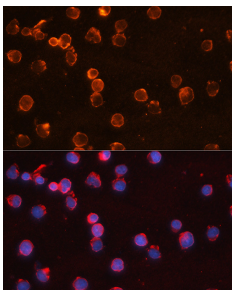


Anti-IL-10 Antibody (A308581)

Specifications:

Name:	Anti-IL-10 Antibody
Description:	Rabbit polyclonal antibody to IL-10.
Applications:	ICC/IF
Recommended Dilutions:	ICC/IF: 1:50-1:200
Reactivity:	Human, Mouse, Rat
Immunogen:	A synthetic peptide corresponding to a sequence within amino acids 50-150 of human IL10 (NP_000563.1).
Sequence:	RVKTFQMKDQLDNLLLKESLLEDFKGYLGQCALSEMIQFYLEEVMPPQAENQDPDIKA HVNSLGENLKTLLRRLRRCHRFLPCENKSKAVEQVKNAFNKLQ
Host:	Rabbit
Clonality:	Polyclonal
Isotype:	IgG
Conjugate:	Unconjugated
Purification:	Affinity purification.
Product Form:	Liquid
Formulation:	Supplied in Phosphate Buffered Saline, pH 7.3, with 50% Glycerol and 0.01% Thiomersal.
Storage:	Shipped at 4°C. Upon delivery aliquot and store at -20°C. Avoid freeze / thaw cycles.
Disclaimer:	This product is for research use only. It is not intended for diagnostic or therapeutic use.

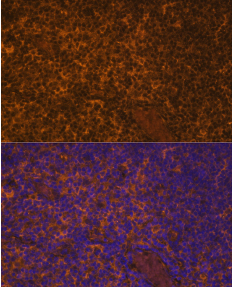
Images:



Immunofluorescence analysis of Jurkat cells using Anti-IL-10 Antibody (A308581) at a dilution of 1:100. DAPI was used to stain the cell nuclei (blue).

Anti-IL-10 Antibody (A308581)

Images continued:



Immunofluorescence analysis of rat thymus using Anti-IL-10 Antibody (A308581) at a dilution of 1:100. DAPI was used to stain the cell nuclei (blue).