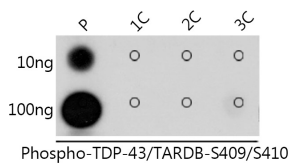


## Anti-TDP43 (phospho Ser409 + Ser410) Antibody (A308714)

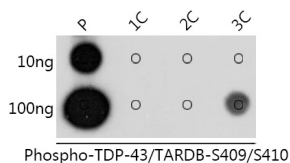
### Specifications:

Name:	Anti-TDP43 (phospho Ser409 + Ser410) Antibody
Description:	Rabbit polyclonal antibody to TDP43 (phospho Ser409 + Ser410).
Applications:	WB, Dot Blot
Recommended Dilutions:	DB: 1:500-1:1,000, WB: 1:500-1:2,000
Reactivity:	Human
Immunogen:	A synthetic phosphorylated peptide around S409 & S410 of human TDP-43/TARDB (NP_031401.1).
Sequence:	SKSSGW
Host:	Rabbit
Clonality:	Polyclonal
Isotype:	IgG
Conjugate:	Unconjugated
Purification:	Affinity purification.
Product Form:	Liquid
Formulation:	Supplied in Phosphate Buffered Saline, pH 7.3, with 50% Glycerol and 0.05% Proclin 300.
Storage:	Shipped at 4°C. Upon delivery aliquot and store at -20°C. Avoid freeze / thaw cycles.
Disclaimer:	This product is for research use only. It is not intended for diagnostic or therapeutic use.

### Images:



Dot blot analysis of a mixture of peptides using Anti-TDP43 (phospho Ser409 + Ser410) Antibody (A308714) at a 1:1,000 dilution. Exposure time: 1s.



Dot blot analysis of a mixture of peptides using Anti-TDP43 (phospho Ser409 + Ser410) Antibody (A308714) at a 1:1,000 dilution. Exposure time: 10s.