

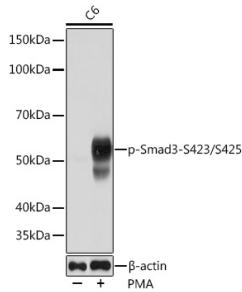
Anti-Smad3 (phospho Ser423 + Ser425) Antibody [ARC0170] (A308811)

Specifications:

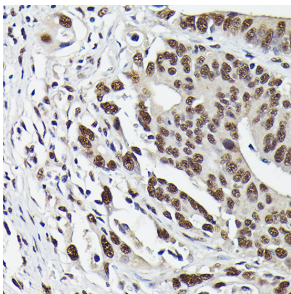
| | |
|------------------------|--|
| Name: | Anti-Smad3 (phospho Ser423 + Ser425) Antibody [ARC0170] |
| Description: | Rabbit monoclonal [ARC0170] antibody to Smad3 (phospho Ser423 + Ser425). |
| Applications: | WB, IHC |
| Recommended Dilutions: | WB: 1:500-1:2,000, IHC: 1:50-1:200 |
| Reactivity: | Human, Mouse, Rat |
| Immunogen: | A synthetic phosphorylated peptide around S423 & S425 of human Smad3 (P84022). |
| Sequence: | SSVS |
| Host: | Rabbit |
| Clonality: | Monoclonal |
| Clone ID: | ARC0170 |
| Isotype: | IgG |
| Conjugate: | Unconjugated |
| Purification: | Affinity purification. |
| Molecular Weight: | 55 kDa |
| Product Form: | Liquid |
| Formulation: | Supplied in Phosphate Buffered Saline, pH 7.3, with 50% Glycerol, 0.05% BSA, and 0.02% Sodium Azide. |
| Storage: | Shipped at 4°C. Upon delivery aliquot and store at -20°C. Avoid freeze / thaw cycles. |
| Disclaimer: | This product is for research use only. It is not intended for diagnostic or therapeutic use. |

Anti-Smad3 (phospho Ser423 + Ser425) Antibody [ARC0170] (A308811)

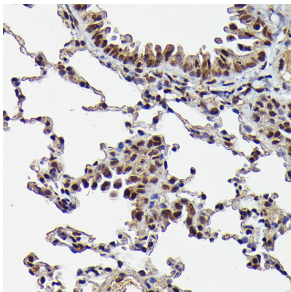
Images:



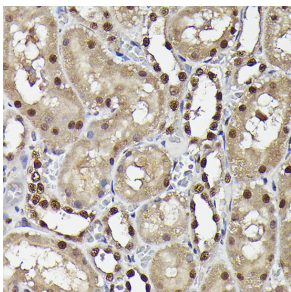
Western blot analysis of extracts of C6 cells, using Anti-Smad3 (phospho Ser423 + Ser425) Antibody [ARC0170] (A308811) at 1:1,000 dilution. C6 cells were treated by PMA/TPA (200 nM) at 37°C for 10 minutes. The secondary antibody was Goat Anti-Rabbit IgG H&L Antibody (HRP) at 1:10,000 dilution. Lysates/proteins were present at 25µg per lane. The blocking buffer used was 3% non-fat dry milk in TBST. Detection was with a ECL Basic Kit. Exposure time: 60s.



Immunohistochemistry analysis of paraffin-embedded human colon carcinoma tissue using Anti-Smad3 (phospho Ser423 + Ser425) Antibody [ARC0170] (A308811) at a dilution of 1:50(40x lens). Perform high pressure antigen retrieval with 10 mM citrate buffer pH 6.0 before commencing with IHC staining protocol.



Immunohistochemistry analysis of paraffin-embedded mouse lung using Anti-Smad3 (phospho Ser423 + Ser425) Antibody [ARC0170] (A308811) at a dilution of 1:50(40x lens). Perform high pressure antigen retrieval with 10 mM citrate buffer pH 6.0 before commencing with IHC staining protocol.



Immunohistochemistry analysis of paraffin-embedded rat kidney using Anti-Smad3 (phospho Ser423 + Ser425) Antibody [ARC0170] (A308811) at a dilution of 1:50(40x lens). Perform high pressure antigen retrieval with 10 mM citrate buffer pH 6.0 before commencing with IHC staining protocol.