

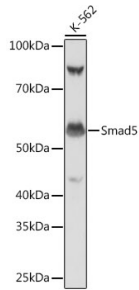
## Anti-SMAD5 Antibody [ARC0448] (A308830)

### Specifications:

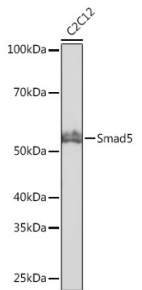
Name:	Anti-SMAD5 Antibody [ARC0448]
Description:	Rabbit monoclonal [ARC0448] antibody to SMAD5.
Applications:	WB, IP
Recommended Dilutions:	WB: 1:500-1:2,000, IP: 1:500-1:1,000
Reactivity:	Human, Mouse
Immunogen:	A synthetic peptide corresponding to a sequence within amino acids 200-300 of human Smad5 (Q99717).
Sequence:	STYPNSPASSGPGSPFQLPADTPPPAYMPPDDQMGQDNSQPMDTSSNNMIPQIMPSISS RDVQPVAYEETPKHWCSIVYYELNNRVGEAFHASSTSVLVDGFT
Host:	Rabbit
Clonality:	Monoclonal
Clone ID:	ARC0448
Isotype:	IgG
Conjugate:	Unconjugated
Purification:	Affinity purification.
Molecular Weight:	60 kDa
Product Form:	Liquid
Formulation:	Supplied in Phosphate Buffered Saline, pH 7.3, with 50% Glycerol, 0.05% BSA, and 0.02% Sodium Azide.
Storage:	Shipped at 4°C. Upon delivery aliquot and store at -20°C. Avoid freeze / thaw cycles.
Disclaimer:	This product is for research use only. It is not intended for diagnostic or therapeutic use.

## Anti-SMAD5 Antibody [ARC0448] (A308830)

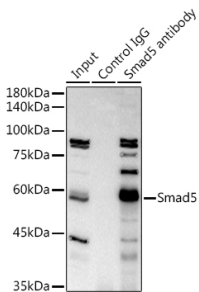
### Images:



Western blot analysis of extracts of K-562 cells, using Anti-SMAD5 Antibody [ARC0448] (A308830) at 1:1,000 dilution. The secondary antibody was Goat Anti-Rabbit IgG H&L Antibody (HRP) at 1:10,000 dilution. Lysates/proteins were present at 25µg per lane. The blocking buffer used was 3% non-fat dry milk in TBST. Detection was with a ECL Basic Kit. Exposure time: 1s.



Western blot analysis of extracts of C2C12 cells, using Anti-SMAD5 Antibody [ARC0448] (A308830) at 1:1,000 dilution. The secondary antibody was Goat Anti-Rabbit IgG H&L Antibody (HRP) at 1:10,000 dilution. Lysates/proteins were present at 25µg per lane. The blocking buffer used was 3% non-fat dry milk in TBST. Detection was with a ECL Basic Kit. Exposure time: 10s.



Immunoprecipitation analysis of 300µg extracts of K-562 cells using 3µg of Anti-SMAD5 Antibody [ARC0448] (A308830). This Western blot was performed on the immunoprecipitate using Anti-SMAD5 Antibody [ARC0448] (A308830) at a dilution of 1:1000.