

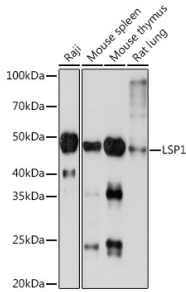
Anti-LSP1 Antibody [ARC1952] (A308852)

Specifications:

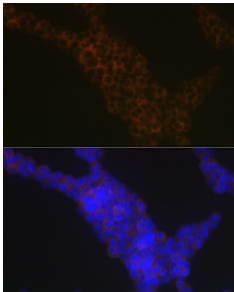
Name:	Anti-LSP1 Antibody [ARC1952]
Description:	Rabbit monoclonal [ARC1952] antibody to LSP1.
Applications:	WB, ICC/IF
Recommended Dilutions:	WB: 1:500-1:2,000, ICC/IF: 1:50-1:200
Reactivity:	Human, Mouse, Rat
Immunogen:	A synthetic peptide corresponding to a sequence within amino acids 240-339 of human LSP1 (P33241).
Sequence:	TAGRTPKLARQASIELPSMAVASTKSRWETGEVQAQSAAKTPSCKDIVAGDMSKSLW EQKGGSKTSSTIKSTPSGKRYKFVATGHGKYEKVLVEGGPAP
Host:	Rabbit
Clonality:	Monoclonal
Clone ID:	ARC1952
Isotype:	IgG
Conjugate:	Unconjugated
Purification:	Affinity purification.
Molecular Weight:	47 kDa
Product Form:	Liquid
Formulation:	Supplied in Phosphate Buffered Saline, pH 7.3, with 50% Glycerol, 0.05% BSA, and 0.02% Sodium Azide.
Storage:	Shipped at 4°C. Upon delivery aliquot and store at -20°C. Avoid freeze / thaw cycles.
Disclaimer:	This product is for research use only. It is not intended for diagnostic or therapeutic use.

Anti-LSP1 Antibody [ARC1952] (A308852)

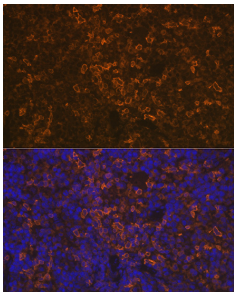
Images:



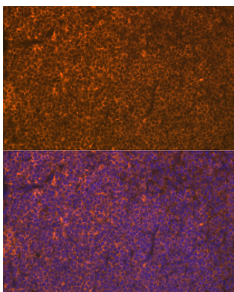
Western blot analysis of extracts of various cell lines, using Anti-LSP1 Antibody [ARC1952] (A308852) at 1:1,000 dilution. The secondary antibody was Goat Anti-Rabbit IgG H&L Antibody (HRP) at 1:10,000 dilution. Lysates/proteins were present at 25 μ g per lane. The blocking buffer used was 3% non-fat dry milk in TBST. Detection was with a ECL Basic Kit. Exposure time: 3min.



Immunofluorescence analysis of Jurkat cells using Anti-LSP1 Antibody [ARC1952] (A308852) at a dilution of 1:100 (40x lens). DAPI was used to stain the cell nuclei (blue).



Immunofluorescence analysis of rat spleen using Anti-LSP1 Antibody [ARC1952] (A308852) at a dilution of 1:100 (40x lens). DAPI was used to stain the cell nuclei (blue).



Immunofluorescence analysis of mouse spleen using Anti-LSP1 Antibody [ARC1952] (A308852) at a dilution of 1:100 (40x lens). DAPI was used to stain the cell nuclei (blue).