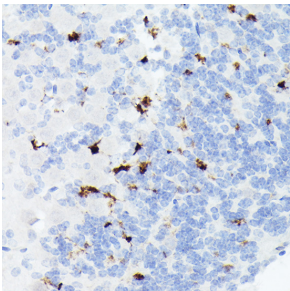


Anti-Somatostatin Antibody [ARC50670] (A308885)

Specifications:

Name:	Anti-Somatostatin Antibody [ARC50670]
Description:	Rabbit monoclonal [ARC50670] antibody to Somatostatin.
Applications:	IHC
Recommended Dilutions:	IHC: 1:50-1:200
Reactivity:	Mouse, Rat
Immunogen:	Recombinant fusion protein containing a sequence corresponding to amino acids 23-116 of human Somatostatin (SST) (NP_001039.1).
Sequence:	TGAPSDPRLRQFLQKSLAAAAGKQELAKYFLAELLSEPNQTENDALEPEDLSQAAEQD EMRLELQRSANSNPAMAPRERKAGCKNFFWKFTTSC
Host:	Rabbit
Clonality:	Monoclonal
Clone ID:	ARC50670
Isotype:	IgG
Conjugate:	Unconjugated
Purification:	Affinity purification.
Product Form:	Liquid
Formulation:	Supplied in Phosphate Buffered Saline, pH 7.3, with 50% Glycerol, 0.05% BSA, and 0.05% Proclin 300.
Storage:	Shipped at 4°C. Upon delivery aliquot and store at -20°C. Avoid freeze / thaw cycles.
Disclaimer:	This product is for research use only. It is not intended for diagnostic or therapeutic use.

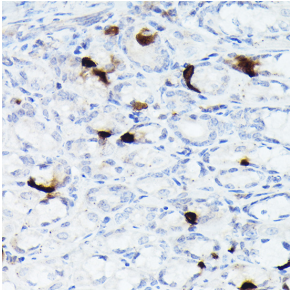
Images:



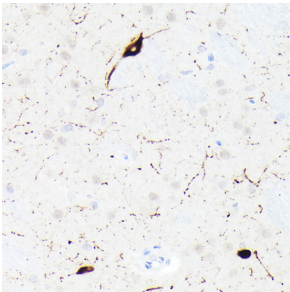
Immunohistochemistry analysis of paraffin-embedded mouse brain using Anti-Somatostatin Antibody [ARC50670] (A308885) at a dilution of 1:200(40x lens). Perform high pressure antigen retrieval with 10 mM citrate buffer pH 6.0 before commencing with IHC staining protocol.

Anti-Somatostatin Antibody [ARC50670] (A308885)

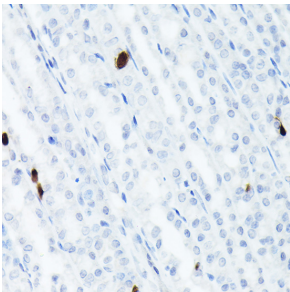
Images continued:



Immunohistochemistry analysis of paraffin-embedded mouse stomach using Anti-Somatostatin Antibody [ARC50670] (A308885) at a dilution of 1:200(40x lens). Perform high pressure antigen retrieval with 10 mM citrate buffer pH 6.0 before commencing with IHC staining protocol.



Immunohistochemistry analysis of paraffin-embedded rat brain using Anti-Somatostatin Antibody [ARC50670] (A308885) at a dilution of 1:200(40x lens). Perform high pressure antigen retrieval with 10 mM citrate buffer pH 6.0 before commencing with IHC staining protocol.



Immunohistochemistry analysis of paraffin-embedded rat stomach using Anti-Somatostatin Antibody [ARC50670] (A308885) at a dilution of 1:200(40x lens). Perform high pressure antigen retrieval with 10 mM citrate buffer pH 6.0 before commencing with IHC staining protocol.