

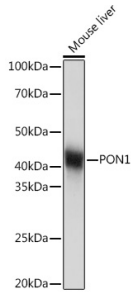
Anti-PON1 Antibody [ARC2001] (A308894)

Specifications:

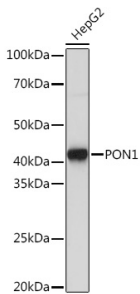
| | |
|------------------------|--|
| Name: | Anti-PON1 Antibody [ARC2001] |
| Description: | Rabbit monoclonal [ARC2001] antibody to PON1. |
| Applications: | WB, IHC, ICC/IF |
| Recommended Dilutions: | WB: 1:500-1:2,000, IHC: 1:50-1:200, ICC/IF: 1:50-1:200 |
| Reactivity: | Human, Mouse, Rat |
| Immunogen: | A synthetic peptide corresponding to a sequence within amino acids 50-150 of human PON1 (P27169). |
| Sequence: | TGSEDL EILPNGLAFISSGLKYPGIKSFNPNSPGKILLMDLNEEDPTVLELGITGSKF DVSSFNPHGISTFTDEDNAMYLLVNHHPDAKSTVELFKFQEEE |
| Host: | Rabbit |
| Clonality: | Monoclonal |
| Clone ID: | ARC2001 |
| Isotype: | IgG |
| Conjugate: | Unconjugated |
| Purification: | Affinity purification. |
| Molecular Weight: | 40 kDa |
| Product Form: | Liquid |
| Formulation: | Supplied in Phosphate Buffered Saline, pH 7.3, with 50% Glycerol, 0.05% BSA, and 0.02% Sodium Azide. |
| Storage: | Shipped at 4°C. Upon delivery aliquot and store at -20°C. Avoid freeze / thaw cycles. |
| Disclaimer: | This product is for research use only. It is not intended for diagnostic or therapeutic use. |

Anti-PON1 Antibody [ARC2001] (A308894)

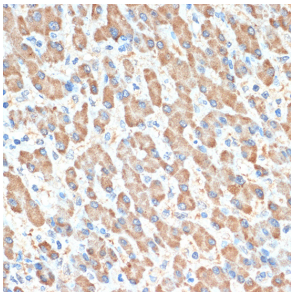
Images:



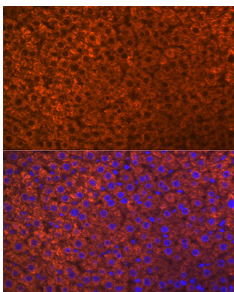
Western blot analysis of extracts of Mouse liver, using Anti-PON1 Antibody [ARC2001] (A308894) at 1:1,000 dilution. The secondary antibody was Goat Anti-Rabbit IgG H&L Antibody (HRP) at 1:10,000 dilution. Lysates/proteins were present at 25 μ g per lane. The blocking buffer used was 3% non-fat dry milk in TBST. Detection was with a ECL Basic Kit. Exposure time: 1s.



Western blot analysis of extracts of HepG2 cells, using Anti-PON1 Antibody [ARC2001] (A308894) at 1:1,000 dilution. The secondary antibody was Goat Anti-Rabbit IgG H&L Antibody (HRP) at 1:10,000 dilution. Lysates/proteins were present at 25 μ g per lane. The blocking buffer used was 3% non-fat dry milk in TBST. Detection was with a ECL Basic Kit. Exposure time: 3s.



Immunohistochemistry analysis of paraffin-embedded human liver using Anti-PON1 Antibody [ARC2001] (A308894) at a dilution of 1:100 (40x lens). Perform microwave antigen retrieval with 10 mM Tris/EDTA buffer pH 9.0 before commencing with IHC staining protocol.



Immunofluorescence analysis of rat liver using Anti-PON1 Antibody [ARC2001] (A308894) at a dilution of 1:100 (40x lens). DAPI was used to stain the cell nuclei (blue).