

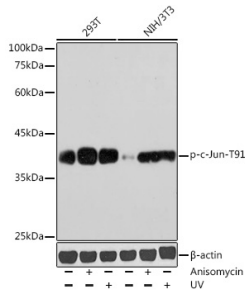
Anti-c-Jun (phospho Thr91) Antibody (A308991)

Specifications:

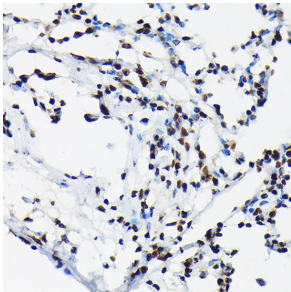
Name:	Anti-c-Jun (phospho Thr91) Antibody
Description:	Rabbit polyclonal antibody to c-Jun (phospho Thr91).
Applications:	WB, IHC, ICC/IF
Recommended Dilutions:	WB: 1:500-1:1,000, IHC: 1:50-1:200, ICC/IF: 1:50-1:200
Reactivity:	Human, Mouse, Rat
Immunogen:	A synthetic phosphorylated peptide around T91 of human JUN (NP_002219.1).
Sequence:	TTTPT
Host:	Rabbit
Clonality:	Polyclonal
Isotype:	IgG
Conjugate:	Unconjugated
Purification:	Affinity purification.
Molecular Weight:	36 kDa
Product Form:	Liquid
Formulation:	Supplied in Phosphate Buffered Saline, pH 7.3, with 50% Glycerol and 0.01% Thiomersal.
Storage:	Shipped at 4°C. Upon delivery aliquot and store at -20°C. Avoid freeze / thaw cycles.
Disclaimer:	This product is for research use only. It is not intended for diagnostic or therapeutic use.

Anti-c-Jun (phospho Thr91) Antibody (A308991)

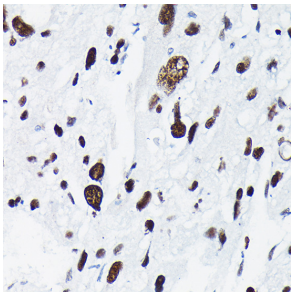
Images:



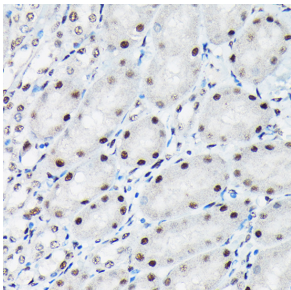
Western blot analysis of extracts of various cell lines, using Anti-c-Jun (phospho Thr91) Antibody (A308991) at 1:1,000 dilution. Both 293T cells and NIH/3T3 cells were treated by Anisomycin (25 ug/ml) at 37°C for 30 minutes after serum-starvation overnight. Both 293T cells and NIH/3T3 cells were treated by UV at room temperature for 15-30 minutes. The secondary antibody was Goat Anti-Rabbit IgG H&L Antibody (HRP) at 1:10,000 dilution. Lysates/proteins were present at 25µg per lane. The blocking buffer used was 3% non-fat dry milk in TBST. Detection was with a ECL Basic Kit. Exposure time: 180s.



Immunohistochemistry analysis of paraffin-embedded rat lung using Anti-c-Jun (phospho Thr91) Antibody (A308991) at a dilution of 1:50 (40x lens). Perform high pressure antigen retrieval with 10 mM citrate buffer pH 6.0 before commencing with IHC staining protocol.



Immunohistochemistry analysis of paraffin-embedded human liver cancer using Anti-c-Jun (phospho Thr91) Antibody (A308991) at a dilution of 1:50 (40x lens). Perform high pressure antigen retrieval with 10 mM citrate buffer pH 6.0 before commencing with IHC staining protocol.



Immunohistochemistry analysis of paraffin-embedded mouse kidney using Anti-c-Jun (phospho Thr91) Antibody (A308991) at a dilution of 1:50 (40x lens). Perform high pressure antigen retrieval with 10 mM citrate buffer pH 6.0 before commencing with IHC staining protocol.