

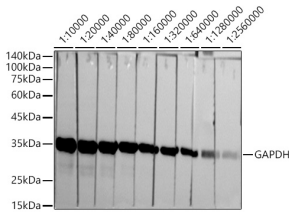
Anti-GAPDH Antibody [ARC50888] (A309068)

Specifications:

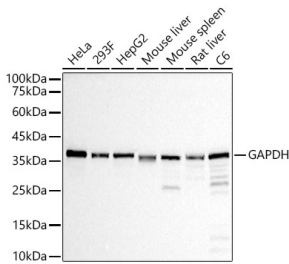
Name:	Anti-GAPDH Antibody [ARC50888]
Description:	Rabbit monoclonal [ARC50888] antibody to GAPDH.
Applications:	WB, IHC, ICC/IF
Recommended Dilutions:	WB: 1:10,000-1:1:120,000, IHC: 1:50-1:200, ICC/IF: 1:50-1:200
Reactivity:	Human, Mouse, Rat
Immunogen:	Recombinant fusion protein containing a sequence corresponding to amino acids 4-335 of human GAPDH (NP_002037.2).
Sequence:	VKVGVNGFGRIGRLVTRAAFNSGKVDIVAINDPFIDLNYMVYMFQYDSTHGKFGHTVK AENGLVINGNPITIFQERDPSKIKWGDAGAEYVVESTGVFTTMEKAG AHLQGGAKRV IISAPSADAPMFVMGVNHEKYDNSLKIISNASCTTNCLAPLAKVIHDNFGIVEGLMTT VHAITATQKTVDGPGSKLWRDGRGALQNIIPASTGAAKAVGKVIPELNGKLTGMAFRV PTANVSVVDLTCRLEKPAKYDDIKKVVVKQASEGPLKGILGYTEHQVWSSDFNSDTHSS TFDAGAGIALNDHFVKLISWYDNEFGYSNRVVDLMAHMASKE
Host:	Rabbit
Clonality:	Monoclonal
Clone ID:	ARC50888
Isotype:	IgG
Conjugate:	Unconjugated
Purification:	Affinity purification.
Molecular Weight:	36 kDa
Product Form:	Liquid
Formulation:	Supplied in Phosphate Buffered Saline, pH 7.3, with 50% Glycerol, 0.05% BSA, and 0.05% Proclin 300.
Storage:	Shipped at 4°C. Upon delivery aliquot and store at -20°C. Avoid freeze / thaw cycles.
Disclaimer:	This product is for research use only. It is not intended for diagnostic or therapeutic use.

Anti-GAPDH Antibody [ARC50888] (A309068)

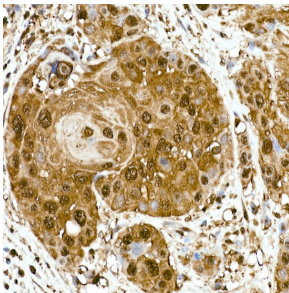
Images:



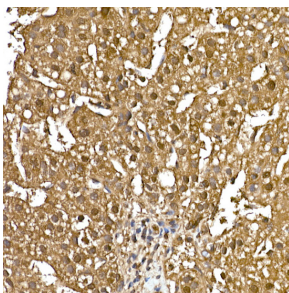
Western blot analysis of extracts of HeLa cells, using Anti-GAPDH Antibody [ARC50888] (A309068) at 1:10,000 dilution. The secondary antibody was Goat Anti-Rabbit IgG H&L Antibody (HRP) at 1:10,000 dilution. Lysates/proteins were present at 25µg per lane. The blocking buffer used was 3% non-fat dry milk in TBST. Detection was with a ECL Basic Kit. Exposure time: 10s.



Western blot analysis of various lysates, using Anti-GAPDH Antibody [ARC50888] (A309068) at 1:10,000 dilution. Lysates/proteins were present at 25µg per lane. The blocking buffer used was 3% non-fat dry milk in TBST. Detection was with a ECL Basic Kit. Exposure time: 10s.



Immunohistochemistry analysis of paraffin-embedded human esophageal cancer using Anti-GAPDH Antibody [ARC50888] (A309068) at a dilution of 1:100 (40x lens). Perform high pressure antigen retrieval with 10 mM citrate buffer pH 6.0 before commencing with IHC staining protocol.



Immunohistochemistry analysis of paraffin-embedded human liver cancer using Anti-GAPDH Antibody [ARC50888] (A309068) at a dilution of 1:100 (40x lens). Perform high pressure antigen retrieval with 10 mM citrate buffer pH 6.0 before commencing with IHC staining protocol.