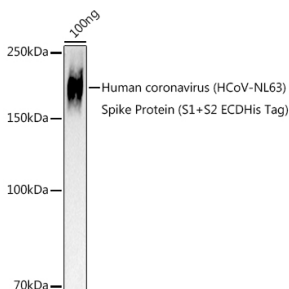


Anti-Human Coronavirus Spike glycoprotein Antibody (A309091)

Specifications:

| | |
|------------------------|---|
| Name: | Anti-Human Coronavirus Spike glycoprotein Antibody |
| Description: | Rabbit polyclonal antibody to Human Coronavirus Spike glycoprotein. |
| Applications: | WB |
| Recommended Dilutions: | WB: 1:500-1:1,000 |
| Reactivity: | HCoV-NL63 |
| Immunogen: | A synthetic peptide corresponding to a sequence within amino acids 1200-1300 of coronavirus Spike S2 (YP_003767.1). |
| Sequence: | VNISRVELHTVIPDYVDVNKTLQEFAQNLPKYVKPNFDLTPFNLTYNLNSSELKQLEA KTASLFQTTVELQGLIDQINSTYVDLKLLNRFENYIKWPWWWW |
| Host: | Rabbit |
| Clonality: | Polyclonal |
| Isotype: | IgG |
| Conjugate: | Unconjugated |
| Purification: | Affinity purification. |
| Molecular Weight: | 160 kDa |
| Product Form: | Liquid |
| Formulation: | Supplied in Phosphate Buffered Saline, pH 7.3, with 50% Glycerol and 0.05% Proclin 300. |
| Storage: | Shipped at 4°C. Upon delivery aliquot and store at -20°C. Avoid freeze / thaw cycles. |
| Disclaimer: | This product is for research use only. It is not intended for diagnostic or therapeutic use. |

Images:



Western blot analysis of extracts of Human coronavirus (HCoV-NL63) Spike Protein (S1+S2 ECDHis Tag), using Anti-Human Coronavirus Spike glycoprotein Antibody (A309091) at 1:1,000 dilution. The secondary antibody was Goat Anti-Rabbit IgG H&L Antibody (HRP) at 1:10,000 dilution. Lysates/proteins were present at 25µg per lane. The blocking buffer used was 3% non-fat dry milk in TBST. Detection was with a ECL Basic Kit. Exposure time: 90s.