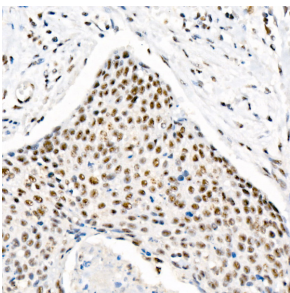


## Anti-Chk2 (phospho Thr68) Antibody [ARC58395] (A309132)

### Specifications:

Name:	Anti-Chk2 (phospho Thr68) Antibody [ARC58395]
Description:	Rabbit monoclonal [ARC58395] antibody to Chk2 (phospho Thr68).
Applications:	IHC
Recommended Dilutions:	IHC: 1:500-1:1,000
Reactivity:	Human, Mouse, Rat
Immunogen:	A synthetic phosphorylated peptide around T68 of human Chk2 (NP_009125.1).
Sequence:	VSTQE
Host:	Rabbit
Clonality:	Monoclonal
Clone ID:	ARC58395
Isotype:	IgG
Conjugate:	Unconjugated
Purification:	Affinity purification.
Product Form:	Liquid
Formulation:	Supplied in Phosphate Buffered Saline, pH 7.3, with 50% Glycerol, 0.05% BSA, and 0.05% Proclin 300.
Storage:	Shipped at 4°C. Upon delivery aliquot and store at -20°C. Avoid freeze / thaw cycles.
Disclaimer:	This product is for research use only. It is not intended for diagnostic or therapeutic use.

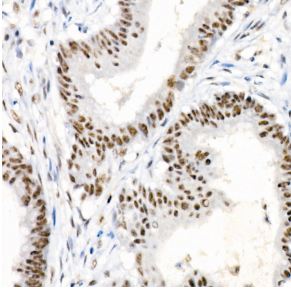
### Images:



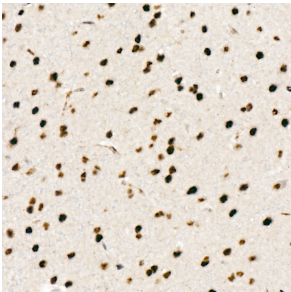
Immunohistochemistry analysis of paraffin-embedded human cervix cancer tissue using Anti-Chk2 (phospho Thr68) Antibody [ARC58395] (A309132) at a dilution of 1:1,000 (40x lens). Perform high pressure antigen retrieval with 10 mM citrate buffer pH 6.0 before commencing with IHC staining protocol.

## Anti-Chk2 (phospho Thr68) Antibody [ARC58395] (A309132)

Images continued:



Immunohistochemistry analysis of paraffin-embedded human colon carcinoma tissue using Anti-Chk2 (phospho Thr68) Antibody [ARC58395] (A309132) at a dilution of 1:1,000 (40x lens). Perform high pressure antigen retrieval with 10 mM citrate buffer pH 6.0 before commencing with IHC staining protocol.



Immunohistochemistry analysis of paraffin-embedded mouse brain using Anti-Chk2 (phospho Thr68) Antibody [ARC58395] (A309132) at a dilution of 1:1,000 (40x lens). Perform high pressure antigen retrieval with 10 mM citrate buffer pH 6.0 before commencing with IHC staining protocol.