

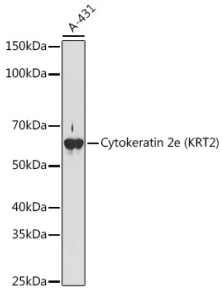
Anti-Cytokeratin 2e Antibody [ARC1925] (A309233)

Specifications:

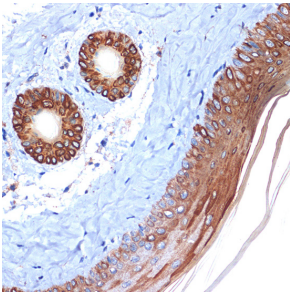
Name:	Anti-Cytokeratin 2e Antibody [ARC1925]
Description:	Rabbit monoclonal [ARC1925] antibody to Cytokeratin 2e.
Applications:	WB, IHC, ICC/IF
Recommended Dilutions:	WB: 1:500-1:1,000, IHC: 1:50-1:200, ICC/IF: 1:50-1:200
Reactivity:	Human, Mouse, Rat
Immunogen:	Recombinant fusion protein containing a sequence corresponding to amino acids 293-422 of human Cytokeratin 2e (KRT2) (P35908).
Sequence:	YMIKVELQSKVDLLNQEIEFLKVLDAEISQIHQSVTDTNVILSMDNSRNLDLDSIIA EVKAQYEEIAQRSKEEAEALYHSKYEELQVTVGRHGDSLKEIKIEISELNRVIQRLQG EIAHVKKQCKNVQD
Host:	Rabbit
Clonality:	Monoclonal
Clone ID:	ARC1925
Isotype:	IgG
Conjugate:	Unconjugated
Purification:	Affinity purification.
Molecular Weight:	65 kDa
Product Form:	Liquid
Formulation:	Supplied in Phosphate Buffered Saline, pH 7.3, with 50% Glycerol, 0.05% BSA, and 0.02% Sodium Azide.
Storage:	Shipped at 4°C. Upon delivery aliquot and store at -20°C. Avoid freeze / thaw cycles.
Disclaimer:	This product is for research use only. It is not intended for diagnostic or therapeutic use.

Anti-Cytokeratin 2e Antibody [ARC1925] (A309233)

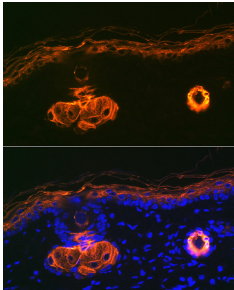
Images:



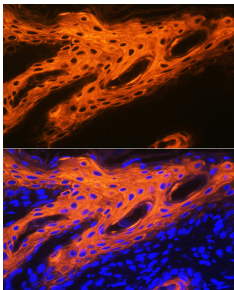
Western blot analysis of extracts of A-431 cells, using Anti-Cytokeratin 2e Antibody [ARC1925] (A309233) at 1:1,000 dilution. The secondary antibody was Goat Anti-Rabbit IgG H&L Antibody (HRP) at 1:10,000 dilution. Lysates/proteins were present at 25µg per lane. The blocking buffer used was 3% non-fat dry milk in TBST. Detection was with a ECL Basic Kit. Exposure time: 180s.



Immunohistochemistry analysis of paraffin-embedded mouse skin using Anti-Cytokeratin 2e Antibody [ARC1925] (A309233) at a dilution of 1:100 (40x lens). Perform microwave antigen retrieval with 10 mM Tris/EDTA buffer pH 9.0 before commencing with IHC staining protocol.



Immunofluorescence analysis of rat skin using Anti-Cytokeratin 2e Antibody [ARC1925] (A309233) at a dilution of 1:100 (40x lens). DAPI was used to stain the cell nuclei (blue).



Immunofluorescence analysis of human skin using Anti-Cytokeratin 2e Antibody [ARC1925] (A309233) at a dilution of 1:100 (40x lens). DAPI was used to stain the cell nuclei (blue).