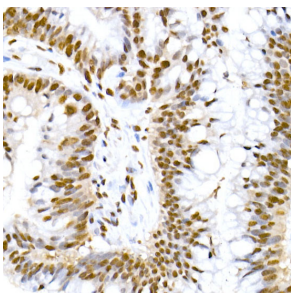


Anti-MDM2 (phospho Ser166) Antibody [ARC2909] (A309403)

Specifications:

| | |
|------------------------|--|
| Name: | Anti-MDM2 (phospho Ser166) Antibody [ARC2909] |
| Description: | Rabbit monoclonal [ARC2909] antibody to MDM2 (phospho Ser166). |
| Applications: | IHC |
| Recommended Dilutions: | IHC: 1:50-1:200 |
| Reactivity: | Human, Mouse, Rat |
| Immunogen: | A phospho synthetic peptide corresponding to residues surrounding S166 of Human MDM2. |
| Host: | Rabbit |
| Clonality: | Monoclonal |
| Clone ID: | ARC2909 |
| Isotype: | IgG |
| Conjugate: | Unconjugated |
| Purification: | Affinity purification. |
| Product Form: | Liquid |
| Formulation: | Supplied in Phosphate Buffered Saline, pH 7.3, with 50% Glycerol, 0.05% BSA, and 0.02% Sodium Azide. |
| Storage: | Shipped at 4°C. Upon delivery aliquot and store at -20°C. Avoid freeze / thaw cycles. |
| Disclaimer: | This product is for research use only. It is not intended for diagnostic or therapeutic use. |

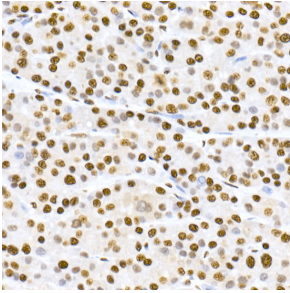
Images:



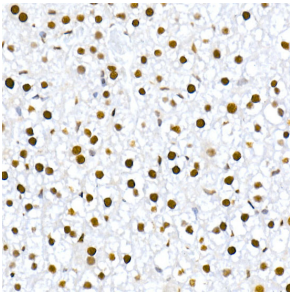
Immunohistochemistry analysis of paraffin-embedded human colon carcinoma tissue using Anti-MDM2 (phospho Ser166) Antibody [ARC2909] (A309403) at a dilution of 1:20 (40x lens). Perform high pressure antigen retrieval with 10 mM citrate buffer pH 6.0 before commencing with IHC staining protocol.

Anti-MDM2 (phospho Ser166) Antibody [ARC2909] (A309403)

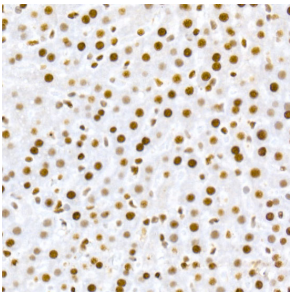
Images continued:



Immunohistochemistry analysis of paraffin-embedded human liver cancer using Anti-MDM2 (phospho Ser166) Antibody [ARC2909] (A309403) at a dilution of 1:20 (40x lens). Perform high pressure antigen retrieval with 10 mM citrate buffer pH 6.0 before commencing with IHC staining protocol.



Immunohistochemistry analysis of paraffin-embedded mouse liver using Anti-MDM2 (phospho Ser166) Antibody [ARC2909] (A309403) at a dilution of 1:20 (40x lens). Perform high pressure antigen retrieval with 10 mM citrate buffer pH 6.0 before commencing with IHC staining protocol.



Immunohistochemistry analysis of paraffin-embedded rat liver using Anti-MDM2 (phospho Ser166) Antibody [ARC2909] (A309403) at a dilution of 1:20 (40x lens). Perform high pressure antigen retrieval with 10 mM citrate buffer pH 6.0 before commencing with IHC staining protocol.