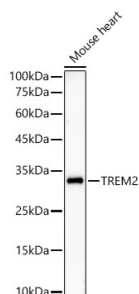


## Anti-TREM2 Antibody [ARC59142] (A309499)

### Specifications:

Name:	Anti-TREM2 Antibody [ARC59142]
Description:	Rabbit monoclonal [ARC59142] antibody to TREM2.
Applications:	WB
Recommended Dilutions:	WB: 1:2,000-1:9,000
Reactivity:	Mouse
Immunogen:	Recombinant protein of human TREM2.
Host:	Rabbit
Clonality:	Monoclonal
Clone ID:	ARC59142
Isotype:	IgG
Conjugate:	Unconjugated
Purification:	Affinity purification.
Molecular Weight:	30 - 50 kDa
Product Form:	Liquid
Formulation:	Supplied in Phosphate Buffered Saline, pH 7.3, with 50% Glycerol, 0.05% BSA, and 0.05% Proclin 300.
Storage:	Shipped at 4°C. Upon delivery aliquot and store at -20°C. Avoid freeze / thaw cycles.
Disclaimer:	This product is for research use only. It is not intended for diagnostic or therapeutic use.

### Images:



Western blot analysis of Mouse heart, using Anti-TREM2 Antibody [ARC59142] (A309499) at 1:8,000 dilution. The secondary antibody was Goat Anti-Rabbit IgG H&L Antibody (HRP) at 1:10,000 dilution. Lysates/proteins were present at 25µg per lane. The blocking buffer used was 3% non-fat dry milk in TBST. Detection was with a ECL Enhanced Kit (RM00021). Exposure time: 180s.