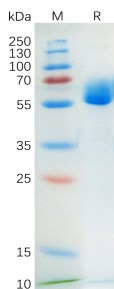


## Recombinant Human SCF Protein (Fc Tag) (A318174)

### Specifications:

Name:	Recombinant Human SCF Protein (Fc Tag)
Applications:	ELISA, SDS-PAGE
Expression System:	HEK293 cells
Nature:	Recombinant
Protein Species:	Human
Protein Length:	Protein fragment.
Sequence:	SCF(Glu26-HisTag214)+hFc(Glu99-Ala330)
Tag:	C-terminal Human Fc Tag
Molecular Weight:	The protein has a predicted molecular mass of 47.2 kDa after removal of the signal peptide. The apparent molecular mass of SCF-hFc is approximately 55-75 kDa due to glycosylation.
Conjugate:	Unconjugated
Purity:	> 95%, by SDS-PAGE and Coomassie blue staining.
Product Form:	Lyophilized
Concentration:	Reconstitution dependent.
Formulation:	Lyophilized from sterile Phosphate Buffered Saline, pH 7.4. Normally 5%-8% Trehalose is added as a protectant before lyophilization.
Storage:	Shipped at 4°C. Lyophilized: Store at -20°C to -80°C. Reconstituted: Aliquot and store at -80°C. Product is stable for one year. Avoid freeze/thaw cycles.
Disclaimer:	This product is for research use only. It is not intended for diagnostic or therapeutic use.

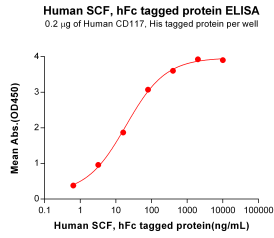
### Images:



Recombinant Human SCF Protein (Fc Tag) (A318174) on SDS-PAGE under reducing conditions.

## Recombinant Human SCF Protein (Fc Tag) (A318174)

Images continued:



ELISA plates were pre-coated with 1 µg/ml (100 µl/well) Recombinant Human c-Kit Protein (6×His Tag) (A318217) which can bind Recombinant Human SCF Protein (Fc Tag) (A318174) in a linear range of 3.2-400 µg/ml.