

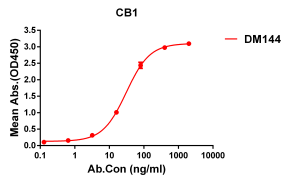
# Anti-Cannabinoid Receptor I Antibody [DM144] - BSA and Azide free (A318564)

## Specifications:

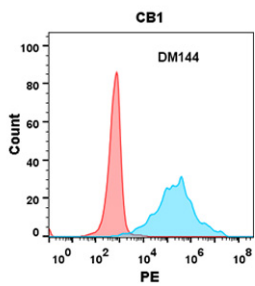
Name:	Anti-Cannabinoid Receptor I Antibody [DM144] - BSA and Azide free
Description:	Recombinant rabbit monoclonal [DM144] antibody to Cannabinoid Receptor I.
Applications:	ELISA, Flow Cytometry
Recommended Dilutions:	ELISA: 1:5,000-10,000, Flow Cytometry: 1:100
Reactivity:	Human
Host:	Rabbit
Clonality:	Monoclonal
Clone ID:	DM144
Isotype:	IgG
Conjugate:	Unconjugated
Purification:	Affinity chromatography.
Concentration:	Reconstitution dependent.
Product Form:	Lyophilized
Reconstitution:	Reconstitute with distilled sterile water.
Formulation:	Lyophilized from sterile Phosphate Buffered Saline, pH 7.4. Normally 5%-8% Trehalose is added as a protectant before lyophilization.
Storage:	Shipped at 4°C. Lyophilized: Store at -20°C to -80°C. Reconstituted: Aliquot and store at -80°C. Product is stable for one year. Avoid freeze/thaw cycles.
General Notes:	Prior to reconstitution, centrifuge the vial at 5,000g for 3-5 minutes at room temperature. Reconstitute with appropriate volume of distilled sterile water to bring product to 1mg/ml concentration. After addition of distilled sterile water, mix by gentle tapping. Note: It is not recommended to vortex or vigorously pipette the sample.
Disclaimer:	This product is for research use only. It is not intended for diagnostic or therapeutic use.

# Anti-Cannabinoid Receptor I Antibody [DM144] - BSA and Azide free (A318564)

Images:



ELISA plate pre-coated by 1 µg/ml (100 µl/well) Recombinant Human Cannabinoid Receptor I Protein (Fc Tag) (A318228) can bind Anti-Cannabinoid Receptor I Antibody [DM144] - Azide free (A318564) in a linear range of 5-200 µg/ml.



Flow cytometry analysis with Anti-Cannabinoid Receptor I Antibody [DM144] - Azide free (A318564) on Expi293 cells transfected with human CB1 (blue histogram) or Expi293 transfected with irrelevant protein (red histogram).