

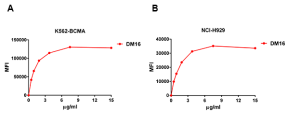
Anti-BCMA Antibody [DM16] - BSA and Azide free (A318668)

Specifications:

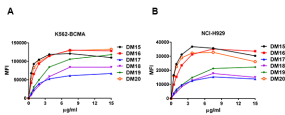
Name:	Anti-BCMA Antibody [DM16] - BSA and Azide free
Description:	Recombinant rabbit monoclonal [DM16] antibody to BCMA.
Applications:	ELISA, Flow Cytometry, IF, IP
Recommended Dilutions:	Flow Cytometry: 1:100, IP: 1:30
Reactivity:	Human
Host:	Rabbit
Clonality:	Monoclonal
Clone ID:	DM16
Isotype:	IgG
Conjugate:	Unconjugated
Purification:	Affinity chromatography.
Concentration:	Reconstitution dependent.
Product Form:	Lyophilized
Reconstitution:	Reconstitute with distilled sterile water.
Formulation:	Lyophilized from sterile Phosphate Buffered Saline, pH 7.4. Normally 5%-8% Trehalose is added as a protectant before lyophilization.
Storage:	Shipped at 4°C. Lyophilized: Store at -20°C to -80°C. Reconstituted: Aliquot and store at -80°C. Product is stable for one year. Avoid freeze/thaw cycles.
General Notes:	Prior to reconstitution, centrifuge the vial at 5,000g for 3-5 minutes at room temperature. Reconstitute with appropriate volume of distilled sterile water to bring product to 1mg/ml concentration. After addition of distilled sterile water, mix by gentle tapping. Note: It is not recommended to vortex or vigorously pipette the sample.
Disclaimer:	This product is for research use only. It is not intended for diagnostic or therapeutic use.

Anti-BCMA Antibody [DM16] - BSA and Azide free (A318668)

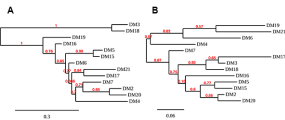
Images:



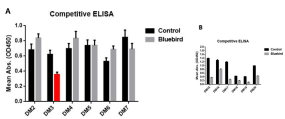
Detection of BCMA in K562-BCMA (K562 cells transduced with gene for full length BCMA) Human Cell Line or NCI-H929 Human Cell Line with Anti-BCMA Antibody [DM16] - Azide free (A318668) by Flow Cytometry.



Binding of different clones Rabbit Anti-Human BCMA/TNFRSF 17 Antigen Affinity-purified monoclonal antibody to NCI-H929 and K562-BCMA cells was determined by flow cytometry.



Phylogenetic analysis of different Anti-BCMA Monoclonal Antibody clones. A) heavy chain and B) light chain.



ELISA plate was coated with Recombinant Human BCMA Protein (Fc Chimera 6xHis Tag), followed by pre-blocking with Anti-BCMA Antibody [DM16] - Azide free (Grey bar) or rabbit control IgG (Black bar), and then different Rabbit Antibodies were added to check the competitive inhibition of Recombinant Human BCMA Protein (Fc Chimera 6xHis Tag). DM3 clone exhibits the strongest inhibition (Red bar). This data indicated that DM3 bind to the same epitope as bb2121.