

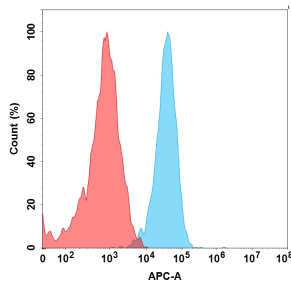
IMAB027 Biosimilar - Anti-Claudin 6 Antibody - BSA and Azide free (A318880)

Specifications:

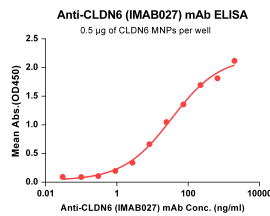
Name:	IMAB027 Biosimilar - Anti-Claudin 6 Antibody - BSA and Azide free
Description:	Recombinant humanized monoclonal antibody to Claudin 6.
Applications:	ELISA, Flow Cytometry
Recommended Dilutions:	ELISA: 1:5,000-10,000, Flow Cytometry: 1:100
Reactivity:	Human
Host:	Humanized
Clonality:	Monoclonal
Isotype:	IgG1
Conjugate:	Unconjugated
Purification:	Affinity chromatography.
Concentration:	Reconstitution dependent.
Product Form:	Lyophilized
Reconstitution:	Reconstitute with distilled sterile water.
Formulation:	Lyophilized from sterile Phosphate Buffered Saline, pH 7.4. Normally 5%-8% Trehalose is added as a protectant before lyophilization.
Storage:	Shipped at 4°C. Lyophilized: Store at -20°C to -80°C. Reconstituted: Aliquot and store at -80°C. Product is stable for one year. Avoid freeze/thaw cycles.
General Notes:	Prior to reconstitution, centrifuge the vial at 5,000g for 3-5 minutes at room temperature. Reconstitute with appropriate volume of distilled sterile water to bring product to 1mg/ml concentration. After addition of distilled sterile water, mix by gentle tapping. Note: It is not recommended to vortex or vigorously pipette the sample.
Disclaimer:	This product is for research use only. It is not intended for diagnostic or therapeutic use.

IMAB027 Biosimilar - Anti-Claudin 6 Antibody - BSA and Azide free (A318880)

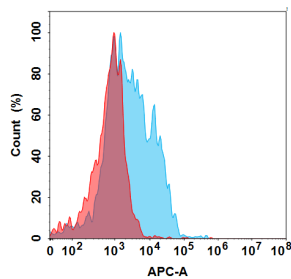
Images:



Flow cytometry analysis of 1µg/ml of IMAB027 Biosimilar - Anti-Claudin 6 Antibody - BSA and Azide free (A318880) on Expi293 cells transfected with Human CLDN6 protein (Blue histogram) or Expi293 transfected with irrelevant protein (Red histogram).



ELISA plates were pre-coated with 0.5 µg/well purified human CLDN6 MNPs. Serial diluted IMAB027 Biosimilar - Anti-Claudin 6 Antibody - BSA and Azide free (A318880) solutions were added, washed, and incubated with secondary antibody before ELISA reading. From the above data, the EC50 for IMAB027 Biosimilar - Anti-Claudin 6 Antibody - BSA and Azide free (A318880) binding with Claudin6 MNPs is 34.36 ng/ml.



Flow cytometry analysis of 15µg/ml of IMAB027 Biosimilar - Anti-Claudin 6 Antibody - BSA and Azide free (A318880) on Expi293 cells transfected with Human CLDN9 protein (Blue histogram) or Expi293 transfected with irrelevant protein (Red histogram).