

## Ramucirumab Biosimilar - Anti-VEGF Receptor 2 Antibody - BSA and Azide free (A318898)

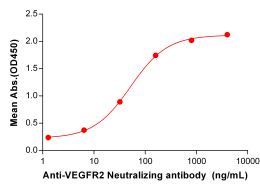
### Specifications:

Name:	Ramucirumab Biosimilar - Anti-VEGF Receptor 2 Antibody - BSA and Azide free
Description:	Recombinant human monoclonal antibody to VEGF Receptor 2.
Applications:	ELISA, Flow Cytometry
Recommended Dilutions:	ELISA: 1:5,000-10,000, Flow Cytometry: 1:100
Reactivity:	Human
Host:	Human
Clonality:	Monoclonal
Isotype:	IgG1
Conjugate:	Unconjugated
Purification:	Affinity chromatography.
Concentration:	Reconstitution dependent.
Product Form:	Lyophilized
Reconstitution:	Reconstitute with distilled sterile water.
Formulation:	Lyophilized from sterile Phosphate Buffered Saline, pH 7.4. Normally 5%-8% Trehalose is added as a protectant before lyophilization.
Storage:	Shipped at 4°C. Lyophilized: Store at -20°C to -80°C. Reconstituted: Aliquot and store at -80°C. Product is stable for one year. Avoid freeze/thaw cycles.
General Notes:	Prior to reconstitution, centrifuge the vial at 5,000g for 3-5 minutes at room temperature. Reconstitute with appropriate volume of distilled sterile water to bring product to 1mg/ml concentration. After addition of distilled sterile water, mix by gentle tapping. Note: It is not recommended to vortex or vigorously pipette the sample.
Disclaimer:	This product is for research use only. It is not intended for diagnostic or therapeutic use.

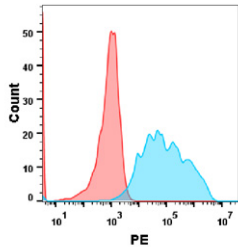
# Ramucirumab Biosimilar - Anti-VEGF Receptor 2 Antibody - BSA and Azide free (A318898)

## Images:

Anti-VEGFR2 (ramucirumab biosimilar)mAb ELISA  
0.5 µg of Human VEGFR2, His tagged protein per well



ELISA plates were pre-coated with 5 µg/ml (100 µl/well) Recombinant Human VEGF Receptor 2 Protein (6xHis Tag) (A318314) which can bind Anti-VEGF Receptor 2 Antibody [Ramucirumab Biosimilar] - Azide free (A318898) in a linear range of 6.4-800 µg/ml.



Flow cytometry analysis with Anti-VEGF Receptor 2 Antibody [Ramucirumab Biosimilar] - Azide free (A318898) 1 µg/ml on Expi293 cells transfected with human VEGFR2 (blue histogram) or Expi293 transfected with irrelevant protein (red histogram).