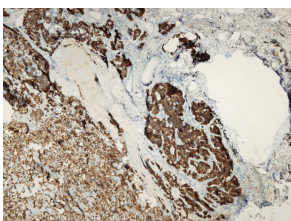


Anti-Synaptophysin Antibody [Q21-Q] (A8238)

Specifications:

Name:	Anti-Synaptophysin Antibody [Q21-Q]
Description:	Rabbit monoclonal (Q21-Q) antibody to Synaptophysin.
Specificity:	This antibody recognizes the epitope between Gly293 - Ser310.
Applications:	IHC-P, IHC-Fr
Recommended Dilutions:	IHC: 1:100-1:200.
Reactivity:	Human
Immunogen:	Peptide derived from C-terminal sequence of human synaptophysin.
Host:	Rabbit
Clonality:	Monoclonal
Clone ID:	Q21-Q
Isotype:	IgG
Conjugate:	Unconjugated
Product Form:	Liquid
Formulation:	Supplied in Tris Buffered Saline, pH 8.0, with 20 mg/ml BSA and 0.05% Sodium Azide.
Storage:	Store at 4°C.
Disclaimer:	This product is for research use only. It is not intended for diagnostic or therapeutic use.

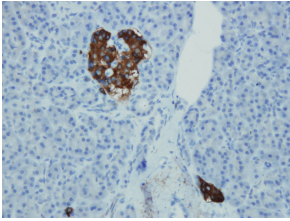
Images:



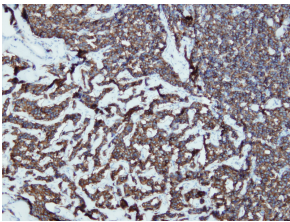
Cytoplasmic expression of synaptophysin in typical carcinoid of the lung. Formalin fixed, paraffin embedded human tissues (4 μ m sections) stained with Anti-Synaptophysin Antibody (A8238).

Anti-Synaptophysin Antibody [Q21-Q] (A8238)

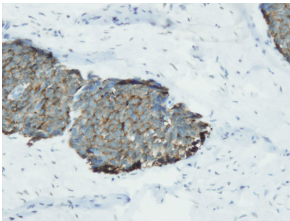
Images continued:



Cytoplasmic expression of synaptophysin in normal pancreatic islets of Langerhans. Formalin fixed, paraffin embedded human tissues (4 μ m sections) stained with Anti-Synaptophysin Antibody (A8238).



Cytoplasmic expression of synaptophysin in neuroendocrine tumor of the pancreas (NET, grade 1). Formalin fixed, paraffin embedded human tissues (4 μ m sections) stained with Anti-Synaptophysin Antibody (A8238).



Cytoplasmic expression of synaptophysin in neuroendocrine tumor of the small intestine (NET, grade 1). Formalin fixed, paraffin embedded human tissues (4 μ m sections) stained with Anti-Synaptophysin Antibody (A8238).