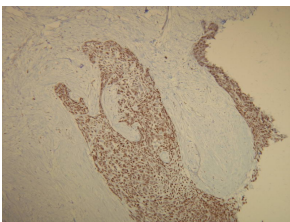


Anti-p63 Antibody [V22-E] (A8248)

Specifications:

Name:	Anti-p63 Antibody [V22-E]
Description:	Rabbit monoclonal (V22-E) antibody to p63.
Specificity:	This antibody recognizes the epitope between Tyr231 - Arg251.
Applications:	IHC-P, IHC-Fr
Recommended Dilutions:	IHC: 1:100-1:200.
Reactivity:	Human
Immunogen:	Peptide derived from the internal sequence of human p63.
Host:	Rabbit
Clonality:	Monoclonal
Clone ID:	V22-E
Isotype:	IgG
Conjugate:	Unconjugated
Product Form:	Liquid
Formulation:	Supplied in Tris Buffered Saline, pH 8.0, with 20 mg/ml BSA and 0.05% Sodium Azide.
Storage:	Store at 4°C.
Disclaimer:	This product is for research use only. It is not intended for diagnostic or therapeutic use.

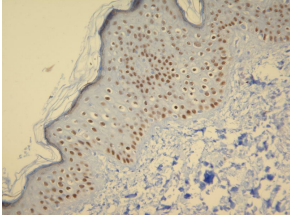
Images:



Nuclear expression of p63 visualized with Anti-p63 Antibody (A8248) in basal cell carcinoma of the skin. Formalin fixed, paraffin embedded human tissues (4µm sections) stained.

Anti-p63 Antibody [V22-E] (A8248)

Images continued:



Nuclear expression of p63 visualized with Anti-p63 Antibody (A8248) in keratinocytes of normal skin. Formalin fixed, paraffin embedded human tissues (4 μ m sections) stained.