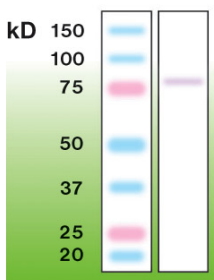


Anti-PKC gamma Antibody [A12-H] (A8256)

Specifications:

Name:	Anti-PKC gamma Antibody [A12-H]
Description:	Rabbit monoclonal (A12-H) antibody to PKC gamma.
Specificity:	This antibody recognizes the epitope located between Leu405 - Pro414.
Applications:	WB, ELISA, IP, ICC
Recommended Dilutions:	WB: 1:2,000, ELISA: 1:5,000-1:20,000.
Reactivity:	Human, Mouse, Rat
Immunogen:	Peptide derived from internal sequence of human PKC gamma.
Host:	Rabbit
Clonality:	Monoclonal
Clone ID:	A12-H
Isotype:	IgG
Conjugate:	Unconjugated
Product Form:	Liquid
Formulation:	Supplied in Tris Buffered Saline, pH 8.0, with 10 mg/ml BSA and 0.05% Sodium Azide.
Storage:	Shipped at 4°C. Upon delivery aliquot and store at -20°C. Avoid freeze / thaw cycles.
Disclaimer:	This product is for research use only. It is not intended for diagnostic or therapeutic use.

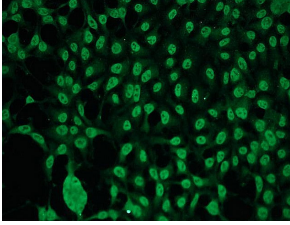
Images:



Western blot of PKC-g in mouse brain crude lysate (200µg of protein loaded).

Anti-PKC gamma Antibody [A12-H] (A8256)

Images continued:



Representative picture of PKC- γ expression in HEK293 cells, visualized with Anti-PKC gamma Antibody (A8256). Primary antibody dilution: 1:200.