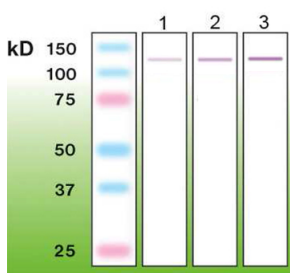


## Anti-p63 Antibody [C24-I] (A8279)

### Specifications:

|                        |  |
|------------------------|--|
| Name:                  | Anti-p63 Antibody [C24-I]  |
| Description:           | Rabbit monoclonal (C24-I) antibody to p63.   |
| Specificity:           | This antibody recognizes the epitope located between Val69 - Lys88.                          |
| Applications:          | WB, ELISA, IP, ICC   |
| Recommended Dilutions: | WB: 1:1,000, ELISA: 1:20,000-1:40,000.   |
| Reactivity:            | Human, Mouse, Rat  |
| Immunogen:             | Peptide derived from the region close to the N-terminus of human p63 protein.                |
| Host:                  | Rabbit   |
| Clonality:             | Monoclonal   |
| Clone ID:              | C24-I  |
| Isotype:               | IgG  |
| Conjugate:             | Unconjugated   |
| Product Form:          | Liquid   |
| Formulation:           | Supplied in Tris Buffered Saline, pH 8.0, with 10 mg/ml BSA and 0.05% Sodium Azide.          |
| Storage:               | Shipped at 4°C. Upon delivery aliquot and store at -20°C. Avoid freeze / thaw cycles.        |
| Disclaimer:            | This product is for research use only. It is not intended for diagnostic or therapeutic use. |

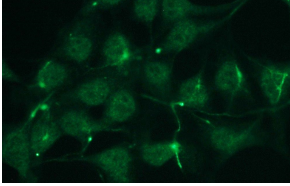
### Images:



Western blot of p63/TP63. Lane 1: 100ng. Lane 2: 200ng. Lane 3: 500ng of recombinant human p63/TP63 (N-term GST p63/TP63, aa 1 - 680).

## Anti-p63 Antibody [C24-I] (A8279)

Images continued:



Representative picture of p63/TP63 expression in HEK293 cells, visualized with Anti-p63/TP63 Antibody (A8279). Primary antibody dilution: 1:300.