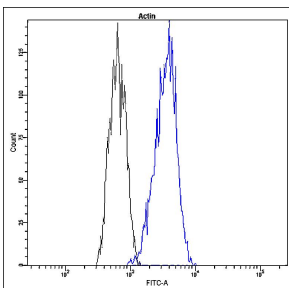


## Anti-beta Actin Antibody [Q20-K] (A8305)

### Specifications:

Name:	Anti-beta Actin Antibody [Q20-K]
Description:	Rabbit monoclonal (Q20-K) antibody to beta Actin (FITC).
Applications:	FC
Recommended Dilutions:	10 $\mu$ l per test.
Reactivity:	Human
Host:	Rabbit
Clonality:	Monoclonal
Clone ID:	Q20-K
Isotype:	IgG
Conjugate:	FITC
Product Form:	Liquid
Formulation:	Supplied in Aqueous Buffer Solution with 10mg/ml BSA and 0.05% Sodium Azide.
Storage:	Store undiluted at 4°C, protect from prolonged exposure to light. Do not freeze.
Disclaimer:	This product is for research use only. It is not intended for diagnostic or therapeutic use.

### Images:



Profile of Actin expression in peripheral blood lymphocytes analyzed by the BD FACSCanto II. Blood cells of healthy patient were fixed, permeabilized and stained with Anti-beta Actin Antibody (FITC) (A8305) (blue, 10 $\mu$ l per test) or with an isotype control (black).