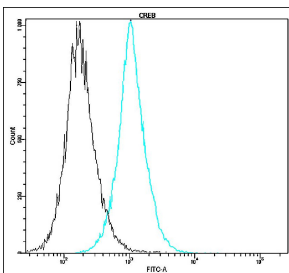


Anti-CREB Antibody [A17-A] (A8314)

Specifications:

| | |
|------------------------|--|
| Name: | Anti-CREB Antibody [A17-A] |
| Description: | Rabbit monoclonal (A17-A) antibody to CREB (FITC). |
| Applications: | FC |
| Recommended Dilutions: | 10 μ l per test. |
| Reactivity: | Human |
| Host: | Rabbit |
| Clonality: | Monoclonal |
| Clone ID: | A17-A |
| Isotype: | IgG |
| Conjugate: | FITC |
| Product Form: | Liquid |
| Formulation: | Supplied in Aqueous Buffer Solution with 10mg/ml BSA and 0.05% Sodium Azide. |
| Storage: | Store undiluted at 4°C, protect from prolonged exposure to light. Do not freeze. |
| Disclaimer: | This product is for research use only. It is not intended for diagnostic or therapeutic use. |

Images:



Profile of human IMR32 cell line analyzed by the BD FACSCanto II. Cells were fixed, permeabilized and stained with Anti-CREB Antibody (FITC) (A8314) (blue, 10 μ l per test) or with an isotype control (black).