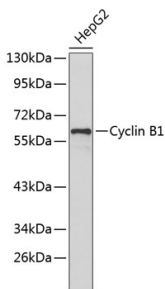


Anti-Cyclin B1 Antibody (A8393)

Specifications:

Name:	Anti-Cyclin B1 Antibody
Description:	Rabbit polyclonal antibody to Cyclin B1.
Applications:	WB
Recommended Dilutions:	WB: 1:500-1:2,000
Reactivity:	Human
Immunogen:	A synthetic peptide corresponding to a sequence within amino acids 350-433 of human Cyclin B1 (NP_114172.1).
Sequence:	CLALKILDNGEWTPTLQHLYSYTEESLLPVMQHLAKNVVMVNQGLTKHMTVKNKYATS KHAKISTLPQLNSALVQDLAKAVAKV
Host:	Rabbit
Clonality:	Polyclonal
Isotype:	IgG
Conjugate:	Unconjugated
Purification:	Affinity purification.
Molecular Weight:	60 kDa
Product Form:	Liquid
Formulation:	Supplied in Phosphate Buffered Saline, pH 7.3, with 50% Glycerol and 0.01% Thiomersal.
Storage:	Shipped at 4°C. Upon delivery aliquot and store at -20°C. Avoid freeze / thaw cycles.
Disclaimer:	This product is for research use only. It is not intended for diagnostic or therapeutic use.

Images:



Western blot analysis of extracts of HepG2 cells, using Anti-Cyclin B1 Antibody (A8393). The secondary antibody was Goat Anti-Rabbit IgG H&L Antibody (HRP) at 1:10,000 dilution. Lysates/proteins were present at 25µg per lane. The blocking buffer used was 3% non-fat dry milk in TBST.