

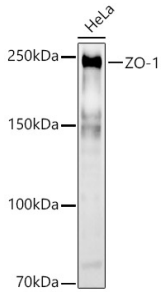
Anti-ZO1 tight junction protein Antibody (A8449)

Specifications:

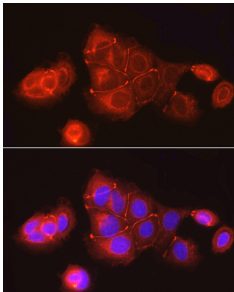
Name:	Anti-ZO1 tight junction protein Antibody
Description:	Rabbit polyclonal antibody to ZO1 tight junction protein.
Applications:	WB, ICC/IF
Recommended Dilutions:	WB: 1:1,000-1:5,000, ICC/IF: 1:50-1:200
Reactivity:	Human, Mouse
Immunogen:	Recombinant fusion protein containing a sequence corresponding to amino acids 1446-1748 of human TJP1 (NP_003248.3).
Sequence:	SLHIHSGAHGEGNSVSLDFQNSLVSKPDPPPSQNKPATFRPPNREDTAQAAFYPQKS FPDKAPVNGTEQTQKTVTPAYNRFTPYPKPYTSSARPFERKFESPKFNHNLLPSETAHKP DLSSKTPTSPKTLVKSHSLAQPFDFSGVETFSIHAEKPKYQINNISTVPAIPVSPS AVEEDEDEDGHTVVATARGIFNSNGGVLSSIETGVSIIIPQGAIPGVEQEYFKVCR DNSILPPLDKEKGETLLSPLVMCGPHGLKFLKPVLELRPHCDPKTWQNKCLPGDPNYL VGANCVSVLIDHF
Host:	Rabbit
Clonality:	Polyclonal
Isotype:	IgG
Conjugate:	Unconjugated
Purification:	Affinity purification.
Molecular Weight:	250 kDa
Product Form:	Liquid
Formulation:	Supplied in Phosphate Buffered Saline, pH 7.3, with 50% Glycerol and 0.05% Proclin 300.
Storage:	Shipped at 4°C. Upon delivery aliquot and store at -20°C. Avoid freeze / thaw cycles.
Disclaimer:	This product is for research use only. It is not intended for diagnostic or therapeutic use.

Anti-ZO1 tight junction protein Antibody (A8449)

Images:



Western blot analysis of HeLa, using Anti-ZO1 tight junction protein Antibody (A8449) at 1:2,000 dilution. The secondary antibody was Goat Anti-Rabbit IgG H&L Antibody (HRP) at 1:10,000 dilution. Lysates/proteins were present at 25 μ g per lane. The blocking buffer used was 3% non-fat dry milk in TBST. Detection was with a ECL Basic Kit. Exposure time: 30s.



Immunofluorescence analysis of MCF7 cells using Anti-ZO1 tight junction protein Antibody (A8449) at a dilution of 1:100 (40x lens). DAPI was used to stain the cell nuclei (blue).