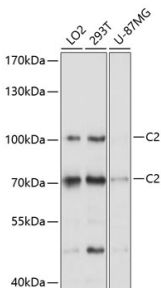


## Anti-C2 Antibody (A8546)

### Specifications:

|                        |  |
|------------------------|--|
| Name:                  | Anti-C2 Antibody   |
| Description:           | Rabbit polyclonal antibody to C2.  |
| Applications:          | WB   |
| Recommended Dilutions: | WB: 1:500-1:2,000  |
| Reactivity:            | Human, Mouse, Rat  |
| Immunogen:             | A synthetic peptide corresponding to a sequence within amino acids 150-250 of human C2 (NP_000054.2).      |
| Sequence:              | HCPNPGISLGAVRTGFRFGHGDKVRYRCSSNLVLTGSSERECQGNGVWSGTEPICRQP<br>YSYDFPEDVAPALGTSFSHMLGATNPTQKTKESSLGRKIQIQRS |
| Host:                  | Rabbit   |
| Clonality:             | Polyclonal   |
| Isotype:               | IgG  |
| Conjugate:             | Unconjugated   |
| Purification:          | Affinity purification.   |
| Molecular Weight:      | 70 kDa / 110 kDa   |
| Product Form:          | Liquid   |
| Formulation:           | Supplied in Phosphate Buffered Saline, pH 7.3, with 50% Glycerol and 0.02% Sodium Azide.                   |
| Storage:               | Shipped at 4°C. Upon delivery aliquot and store at -20°C. Avoid freeze / thaw cycles.                      |
| Disclaimer:            | This product is for research use only. It is not intended for diagnostic or therapeutic use.               |

### Images:



Western blot analysis of extracts of various cell lines, using Anti-C2 Antibody (A8546) at 1:1,000 dilution. The secondary antibody was Goat Anti-Rabbit IgG H&L Antibody (HRP) at 1:10,000 dilution. Lysates/proteins were present at 25 $\mu$ g per lane. The blocking buffer used was 3% non-fat dry milk in TBST. Detection was with a ECL Basic Kit. Exposure time: 5s.