

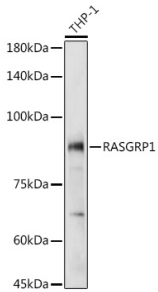
## Anti-RASGRP1 Antibody (A8633)

### Specifications:

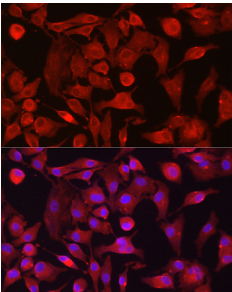
Name:	Anti-RASGRP1 Antibody
Description:	Rabbit polyclonal antibody to RASGRP1.
Applications:	WB, ICC/IF
Recommended Dilutions:	WB: 1:500-1:1,000, ICC/IF: 1:50-1:200
Reactivity:	Human, Mouse, Rat
Immunogen:	Recombinant fusion protein containing a sequence corresponding to amino acids 598-797 of human RASGRP1 (NP_005730.2).
Sequence:	PVAPTENNTSVGPVSNLCSLGAKDLLHAPEEGPFTFPNGEAVEHGEESKDRTIMLMGV SSQKISLRLKRAVAHKATQTESQPWIGSEGPSGPFVLSSPRKTAQDTLYVLPSPSPC PSPVLVRKRAFVKWENKDSLKISKEELRHLRLPTYQELEQEINTLKADNDALKIQLKY AQKKIESLQLEKSNHVLAQMEQGDCS
Host:	Rabbit
Clonality:	Polyclonal
Isotype:	IgG
Conjugate:	Unconjugated
Purification:	Affinity purification.
Molecular Weight:	90 kDa
Product Form:	Liquid
Formulation:	Supplied in Phosphate Buffered Saline, pH 7.3, with 50% Glycerol and 0.02% Sodium Azide.
Storage:	Shipped at 4°C. Upon delivery aliquot and store at -20°C. Avoid freeze / thaw cycles.
Disclaimer:	This product is for research use only. It is not intended for diagnostic or therapeutic use.

## Anti-RASGRP1 Antibody (A8633)

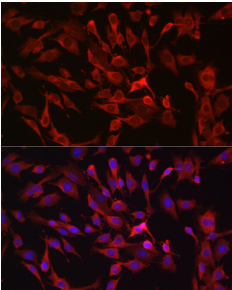
### Images:



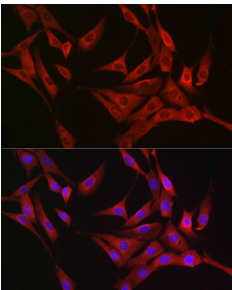
Western blot analysis of extracts of THP-1 cells, using Anti-RASGRP1 Antibody (A8633) at 1:1,000 dilution. The secondary antibody was Goat Anti-Rabbit IgG H&L Antibody (HRP) at 1:10,000 dilution. Lysates/proteins were present at 25 $\mu$ g per lane. The blocking buffer used was 3% non-fat dry milk in TBST. Detection was with a ECL Basic Kit. Exposure time: 30s.



Immunofluorescence analysis of A-549 cells using Anti-RASGRP1 Antibody (A8633) at a dilution of 1:100 (40x lens). DAPI was used to stain the cell nuclei (blue).



Immunofluorescence analysis of C6 cells using Anti-RASGRP1 Antibody (A8633) at a dilution of 1:100 (40x lens). DAPI was used to stain the cell nuclei (blue).



Immunofluorescence analysis of NIH/3T3 cells using Anti-RASGRP1 Antibody (A8633) at a dilution of 1:100 (40x lens). DAPI was used to stain the cell nuclei (blue).