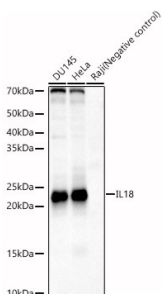


## Anti-IL-18 Antibody (A8859)

### Specifications:

Name:	Anti-IL-18 Antibody
Description:	Rabbit polyclonal antibody to IL-18.
Applications:	WB, IP
Recommended Dilutions:	WB: 1:500-1:1,000, IP: 1:50-1:100
Reactivity:	Human, Mouse, Rat
Immunogen:	A synthetic peptide corresponding to a sequence within amino acids 40-100 of human IL18 (NP_001553.1).
Sequence:	KLESKLSVIRNLNDQQLFIDQGNRPLFEDMTDSDCRDNAPRTIFIISMYKDSQPRGMA VTI
Host:	Rabbit
Clonality:	Polyclonal
Isotype:	IgG
Conjugate:	Unconjugated
Purification:	Affinity purification.
Molecular Weight:	22 kDa
Product Form:	Liquid
Formulation:	Supplied in Phosphate Buffered Saline, pH 7.3, with 50% Glycerol and 0.05% Proclin 300.
Storage:	Shipped at 4°C. Upon delivery aliquot and store at -20°C. Avoid freeze / thaw cycles.
Disclaimer:	This product is for research use only. It is not intended for diagnostic or therapeutic use.

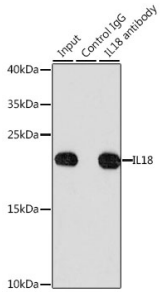
### Images:



Western blot analysis of various lysates, using Anti-IL-18 Antibody (A8859) at 1:1,000 dilution. The secondary antibody was Goat Anti-Rabbit IgG H&L Antibody (HRP) at 1:10,000 dilution. Lysates/proteins were present at 25µg per lane. The blocking buffer used was 3% non-fat dry milk in TBST. Detection was with a ECL Basic Kit. Exposure time: 20s.

## Anti-IL-18 Antibody (A8859)

Images continued:



Immunoprecipitation analysis of 200 $\mu$ g extracts of HeLa cells using 3 $\mu$ g of Anti-IL-18 Antibody (A8859). This Western blot was performed on the immunoprecipitate using Anti-IL-18 Antibody (A8859) at a dilution of 1:1000.