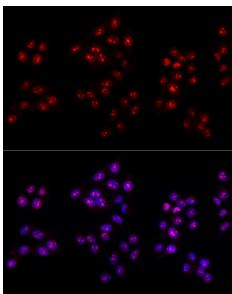


## Anti-Ki67 Antibody (A80435)

### Specifications:

Name:	Anti-Ki67 Antibody
Description:	Rabbit polyclonal antibody to Ki67.
Applications:	ICC/IF
Recommended Dilutions:	ICC/IF: 1:50-1:200
Reactivity:	Human
Immunogen:	A synthetic peptide corresponding to a sequence within amino acids 700-800 of human Ki67 (NP_001139438.1).
Sequence:	GDGKSIRTFKESPKQLDPAARVTGMKKWPRTPKEEAQSLEDLAGFKELFQTPGPSEE SMTDEKTTKIACKSPPPESVDTPSTKQWPKRSLRKADVEEEF
Host:	Rabbit
Clonality:	Polyclonal
Isotype:	IgG
Conjugate:	Unconjugated
Purification:	Affinity purification.
Molecular Weight:	359 kDa
Product Form:	Liquid
Formulation:	Supplied in Phosphate Buffered Saline, pH 7.3, with 50% Glycerol and 0.05% Proclin 300.
Storage:	Shipped at 4°C. Upon delivery aliquot and store at -20°C. Avoid freeze / thaw cycles.
Disclaimer:	This product is for research use only. It is not intended for diagnostic or therapeutic use.

### Images:



Immunofluorescence analysis of HeLa cells using Anti-Ki67 Antibody (A80435) at a dilution of 1:100 (40x lens). DAPI was used to stain the cell nuclei (blue).