

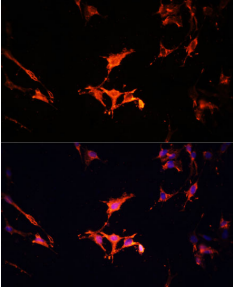
## Anti-LAMTOR1 Antibody (A80625)

### Specifications:

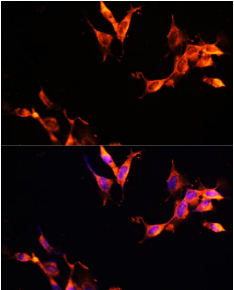
Name:	Anti-LAMTOR1 Antibody
Description:	Rabbit polyclonal antibody to LAMTOR1.
Applications:	WB, IHC, ICC/IF
Recommended Dilutions:	WB: 1:500-1:1,000, IHC: 1:50-1:100, ICC/IF: 1:50-1:100
Reactivity:	Human, Mouse, Rat
Immunogen:	Recombinant fusion protein containing a sequence corresponding to amino acids 1-161 of human LAMTOR1 (NP_060377.1).
Sequence:	MGCCYSSSENE DSDQDREERKLLLDPSSPPTKALNGAEPNYHSLPSARTDEQALLSSIL AKTASNIIDVSAADSQGM EQHEYMDRARQYSTR LAVLSSSLTHWKKLPPLPSLTSQPH QVLASEPIPFSDLQQVSR IAAYAYSALSQIRVDAKEELVVQFGIP
Host:	Rabbit
Clonality:	Polyclonal
Isotype:	IgG
Conjugate:	Unconjugated
Purification:	Affinity purification.
Molecular Weight:	18 kDa
Product Form:	Liquid
Formulation:	Supplied in Phosphate Buffered Saline, pH 7.3, with 50% Glycerol and 0.01% Thiomersal.
Storage:	Shipped at 4°C. Upon delivery aliquot and store at -20°C. Avoid freeze / thaw cycles.
Disclaimer:	This product is for research use only. It is not intended for diagnostic or therapeutic use.

## Anti-LAMTOR1 Antibody (A80625)

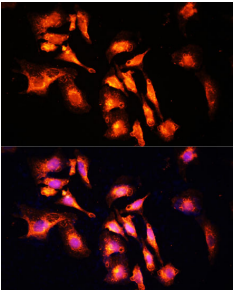
### Images:



Immunofluorescence analysis of C6 cells using Anti-LAMTOR1 Antibody (A80625) at a dilution of 1:100 (40x lens). DAPI was used to stain the cell nuclei (blue).



Immunofluorescence analysis of NIH-3T3 cells using Anti-LAMTOR1 Antibody (A80625) at a dilution of 1:100 (40x lens). DAPI was used to stain the cell nuclei (blue).



Immunofluorescence analysis of U-2 OS cells using Anti-LAMTOR1 Antibody (A80625) at a dilution of 1:100 (40x lens). DAPI was used to stain the cell nuclei (blue).