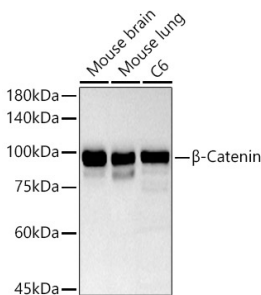


Anti-beta Catenin Antibody (A80679)

Specifications:

Name:	Anti-beta Catenin Antibody
Description:	Rabbit polyclonal antibody to beta Catenin.
Applications:	WB, IHC, IP
Recommended Dilutions:	WB: 1:100-1:500, IHC: 1:20-1:200, IP: 1:500-1:1,000
Reactivity:	Human, Mouse, Rat
Immunogen:	A synthetic peptide corresponding to a sequence within amino acids 1-100 of human β -Catenin (NP_001895.1).
Sequence:	MATQADLMELDMAMEPDRKAAVSHWQQQSYLDSGIHSGATTTAPSLSGKGNPEEEDVD TSQVLYEWEQGFQSFTQEQVADIDGQYAMTRAQRVRAAMFP
Host:	Rabbit
Clonality:	Polyclonal
Isotype:	IgG
Conjugate:	Unconjugated
Purification:	Affinity purification.
Molecular Weight:	92 kDa
Product Form:	Liquid
Formulation:	Supplied in Phosphate Buffered Saline, pH 7.3, with 50% Glycerol and 0.05% Proclin 300.
Storage:	Shipped at 4°C. Upon delivery aliquot and store at -20°C. Avoid freeze / thaw cycles.
Disclaimer:	This product is for research use only. It is not intended for diagnostic or therapeutic use.

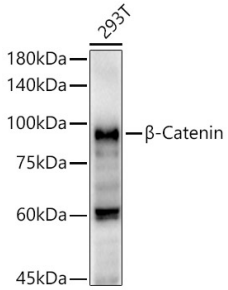
Images:



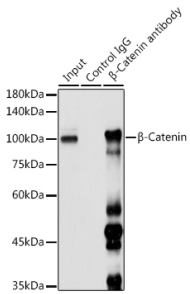
Western blot analysis of extracts of various cell lines, using Anti-beta Catenin Antibody (A80679) at 1:500 dilution. The secondary antibody was Goat Anti-Rabbit IgG H&L Antibody (HRP) at 1:10,000 dilution. Lysates/proteins were present at 25 μ g per lane. The blocking buffer used was 3% non-fat dry milk in TBST. Detection was with a ECL Basic Kit. Exposure time: 180s.

Anti-beta Catenin Antibody (A80679)

Images continued:



Western blot analysis of extracts of 293T cells, using Anti-beta Catenin Antibody (A80679) at 1:500 dilution. The secondary antibody was Goat Anti-Rabbit IgG H&L Antibody (HRP) at 1:10,000 dilution. Lysates/proteins were present at 25µg per lane. The blocking buffer used was 3% non-fat dry milk in TBST. Detection was with a ECL Enhanced Kit (RM00021). Exposure time: 180s.



Immunoprecipitation analysis of 300µg extracts of 293T cells using 3µg of Anti-beta Catenin Antibody (A80679). This Western blot was performed on the immunoprecipitate using Anti-beta Catenin Antibody (A80679) at a dilution of 1:1000.