

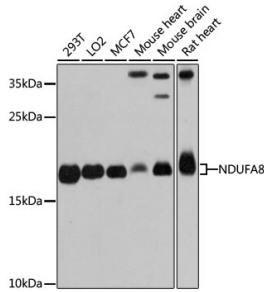
Anti-NDUFA8 Antibody (A80741)

Specifications:

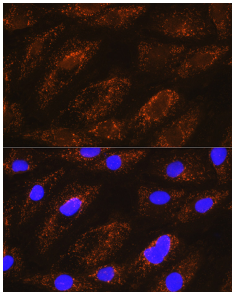
Name:	Anti-NDUFA8 Antibody
Description:	Rabbit polyclonal antibody to NDUFA8.
Applications:	WB, ICC/IF, IP
Recommended Dilutions:	WB: 1:500-1:2,000, ICC/IF: 1:50-1:200, IP: 1:50-1:100
Reactivity:	Human, Mouse, Rat
Immunogen:	Recombinant fusion protein containing a sequence corresponding to amino acids 33-172 of human NDUFA8 (NP_055037.1).
Sequence:	GAQCDKPNKEFMLCRWEEKDPRRCLEEGKLVNKCALDFFRQIKRHCAEPFTEYWTCID YTGQQLFRHCRKQQAQKFDCEVLKLGWVRPDLGELSKVTKVKTDRPLPENPYHSRPRP DPSPEIEGDLQPATHGSRFYFWTK
Host:	Rabbit
Clonality:	Polyclonal
Isotype:	IgG
Conjugate:	Unconjugated
Purification:	Affinity purification.
Molecular Weight:	19 kDa
Product Form:	Liquid
Formulation:	Supplied in Phosphate Buffered Saline, pH 7.3, with 50% Glycerol and 0.01% Thiomersal.
Storage:	Shipped at 4°C. Upon delivery aliquot and store at -20°C. Avoid freeze / thaw cycles.
Disclaimer:	This product is for research use only. It is not intended for diagnostic or therapeutic use.

Anti-NDUFA8 Antibody (A80741)

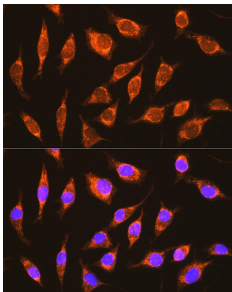
Images:



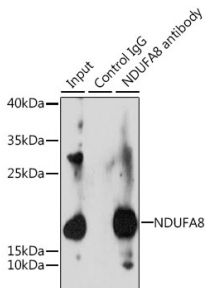
Western blot analysis of extracts of various cell lines, using Anti-NDUFA8 Antibody (A80741) at 1:3,000 dilution. The secondary antibody was Goat Anti-Rabbit IgG H&L Antibody (HRP) at 1:10,000 dilution. Lysates/proteins were present at 25 μ g per lane. The blocking buffer used was 3% non-fat dry milk in TBST. Detection was with a ECL Basic Kit. Exposure time: 30s.



Immunofluorescence analysis of H9C2 cells using Anti-NDUFA8 Antibody (A80741) at a dilution of 1:100 (40x lens). DAPI was used to stain the cell nuclei (blue).



Immunofluorescence analysis of L929 cells using Anti-NDUFA8 Antibody (A80741) at a dilution of 1:100 (40x lens). DAPI was used to stain the cell nuclei (blue).



Immunoprecipitation analysis of 200 μ g extracts of 293T cells using 3 μ g of Anti-NDUFA8 Antibody (A80741). This Western blot was performed on the immunoprecipitate using Anti-NDUFA8 Antibody (A80741) at a dilution of 1:1000.