

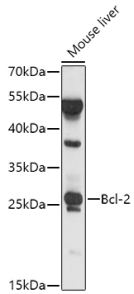
Anti-Bcl-2 Antibody (A81011)

Specifications:

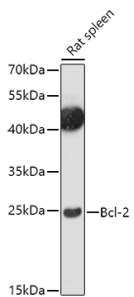
Name:	Anti-Bcl-2 Antibody
Description:	Rabbit polyclonal antibody to Bcl-2.
Applications:	WB, IHC, ICC/IF, IP
Recommended Dilutions:	WB: 1:500-1:1,000, IHC: 1:50-1:200, ICC/IF: 1:50-1:200, IP: 1:50-1:100
Reactivity:	Human, Mouse, Rat
Immunogen:	Recombinant fusion protein containing a sequence corresponding to amino acids 1-239 of human Bcl-2 (P10415).
Sequence:	MAHAGRTGYDNREIVMKYIHYKLSQRGYEWDAGDVGAAPPGAAPAPGIFSSQPGHTPH PAASRDPVARTSPLQTPAAPGAAAGPALSPVPPVVHLTLRQAGDDFSRRYRRDFAEMS SQLHLTPFTARGRFATVVEELFRDGVNWGRIVAFFEFGVMCVESVNREMSPLVDNIA LWMTEYLNRLHTWIQDNGGWDAFVELYGPSMRPLDFSWLSLKTLLSLALVGACITL GAYLGHK
Host:	Rabbit
Clonality:	Polyclonal
Isotype:	IgG
Conjugate:	Unconjugated
Purification:	Affinity purification.
Molecular Weight:	26 kDa
Product Form:	Liquid
Formulation:	Supplied in Phosphate Buffered Saline, pH 7.3, with 50% Glycerol and 0.01% Thiomersal.
Storage:	Shipped at 4°C. Upon delivery aliquot and store at -20°C. Avoid freeze / thaw cycles.
Disclaimer:	This product is for research use only. It is not intended for diagnostic or therapeutic use.

Anti-Bcl-2 Antibody (A81011)

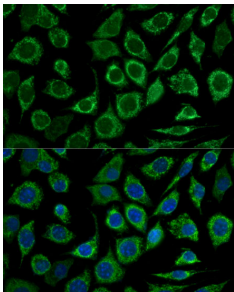
Images:



Western blot analysis of extracts of Mouse liver, using Anti-Bcl-2 Antibody (A81011) at 1:1,000 dilution. The secondary antibody was Goat Anti-Rabbit IgG H&L Antibody (HRP) at 1:10,000 dilution. Lysates/proteins were present at 25 μ g per lane. The blocking buffer used was 3% non-fat dry milk in TBST. Detection was with a ECL Basic Kit. Exposure time: 30s.



Western blot analysis of extracts of Rat spleen, using Anti-Bcl-2 Antibody (A81011) at 1:1,000 dilution. The secondary antibody was Goat Anti-Rabbit IgG H&L Antibody (HRP) at 1:10,000 dilution. Lysates/proteins were present at 25 μ g per lane. The blocking buffer used was 3% non-fat dry milk in TBST. Detection was with a ECL Basic Kit. Exposure time: 90s.



Immunofluorescence analysis of L929 cells using Anti-Bcl-2 Antibody (A81011) at a dilution of 1:100. DAPI was used to stain the cell nuclei (blue).