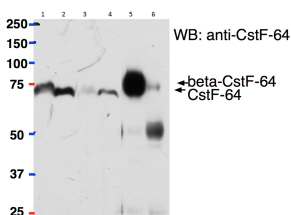


Anti-CSTF2 Antibody (A82473)

Specifications:

Name:	Anti-CSTF2 Antibody
Description:	Goat polyclonal antibody to CSTF2.
Applications:	ELISA, IP
Reactivity:	Mouse
Immunogen:	Synthetic peptide corresponding to Mouse Cstf2 (internal region).
Sequence:	C-PASIERVQQQRT
Host:	Goat
Clonality:	Polyclonal
Isotype:	IgG
Conjugate:	Unconjugated
Purification:	Purified from goat serum by ammonium sulphate precipitation followed by antigen affinity chromatography using the immunizing peptide.
Concentration:	100 µg at 0.5 mg/ml.
Product Form:	Liquid
Formulation:	Supplied in Tris Buffered Saline, pH 7.30, with 0.02% Sodium Azide and 0.5% BSA.
Storage:	Shipped at 4°C. Upon delivery aliquot and store at -20°C. Avoid freeze / thaw cycles.
Disclaimer:	This product is for research use only. It is not intended for diagnostic or therapeutic use.

Images:



Anti-Cstf2 Antibody (A82473) (2µg) used to pull down β-Cstf-64 from Mouse Brain (lane 5) lysate (500µg protein) while it cannot pull down Cstf-64 from Mouse Liver (lane 6) lysate (500µg) protein) using Protein G-coated magnetic beads. A 1/40th part of the lysates were loaded in lanes 1 (Brain) and 2 (Liver) before IP and in lanes 3 (Brain) and 4 (Liver) after IP. Western blot probed with mouse anti-β-Cstf-64/Cstf-64 antibody and detected by chemiluminescence.