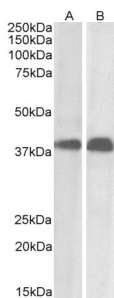


Anti-SET Antibody (A82650)

Specifications:

| | |
|----------------|---|
| Name: | Anti-SET Antibody |
| Description: | Goat polyclonal antibody to SET. |
| Applications: | ELISA, WB |
| Reactivity: | Human |
| Immunogen: | Synthetic peptide corresponding to Human SET (N terminal). |
| Sequence: | SAPAAKVSKKELNS-C |
| Host: | Goat |
| Clonality: | Polyclonal |
| Isotype: | IgG |
| Conjugate: | Unconjugated |
| Purification: | Purified from goat serum by ammonium sulphate precipitation followed by antigen affinity chromatography using the immunizing peptide. |
| Concentration: | 100 µg at 0.5 mg/ml. |
| Product Form: | Liquid |
| Formulation: | Supplied in Tris Buffered Saline, pH 7.30, with 0.02% Sodium Azide and 0.5% BSA. |
| Storage: | Shipped at 4°C. Upon delivery aliquot and store at -20°C. Avoid freeze / thaw cycles. |
| Disclaimer: | This product is for research use only. It is not intended for diagnostic or therapeutic use. |

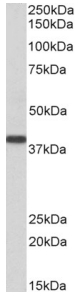
Images:



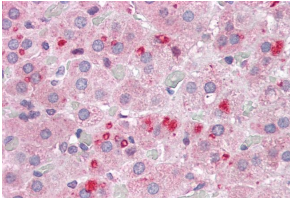
Anti-SET Antibody (A82650) (0.01µg/ml) staining of Daudi (A) and Molt4 (B) cell lysate (35µg protein in RIPA buffer). Primary incubation was 1 hour. Detected by chemiluminescence.

Anti-SET Antibody (A82650)

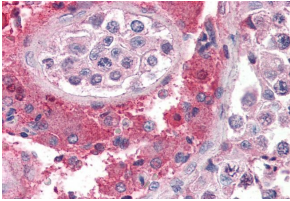
Images continued:



Anti-SET Antibody (A82650) (0.3 μ g/ml) staining of Human Kidney lysate (35 μ g protein in RIPA buffer). Primary incubation was 1 hour. Detected by chemiluminescence.



Anti-SET Antibody (A82650) (3.75 μ g/ml) staining of paraffin embedded Human Adrenal Gland. Steamed antigen retrieval with citrate buffer pH 6, AP-staining.



Anti-SET Antibody (A82650) (3.75 μ g/ml) staining of paraffin embedded Human Testis. Steamed antigen retrieval with citrate buffer pH 6, AP-staining.