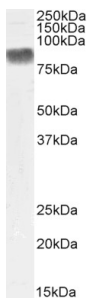


## Anti-PKC beta 1 Antibody (A82665)

### Specifications:

|                |   |
|----------------|---|
| Name:          | Anti-PKC beta 1 Antibody  |
| Description:   | Goat polyclonal antibody to PKC beta 1 (Biotin).  |
| Applications:  | ELISA, WB   |
| Reactivity:    | Human   |
| Immunogen:     | Synthetic peptide corresponding to Human PRKCB (internal region).   |
| Sequence:      | C-DKEFTRQPVELT  |
| Host:          | Goat  |
| Clonality:     | Polyclonal  |
| Isotype:       | IgG   |
| Conjugate:     | Biotin  |
| Purification:  | Purified from goat serum by ammonium sulphate precipitation followed by antigen affinity chromatography using the immunizing peptide. |
| Concentration: | 100 µg at 0.5 mg/ml.  |
| Product Form:  | Liquid  |
| Formulation:   | Supplied in Tris Buffered Saline, pH 7.30, with 0.02% Sodium Azide and 0.5% BSA.  |
| Storage:       | Shipped at 4°C. Upon delivery aliquot and store at -20°C. Avoid freeze / thaw cycles.   |
| Disclaimer:    | This product is for research use only. It is not intended for diagnostic or therapeutic use.  |

### Images:



Anti-PRKCB Antibody (A82665 | Biotin) (0.3 µg/ml) staining of Human Placenta lysate (35 µg protein in RIPA buffer). Primary incubation was 1 hour. Detected by chemiluminescence, using streptavidin-HRP and using NAP blocker as a substitute for skimmed milk.