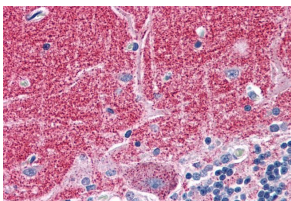


## Anti-SEPT3 Antibody (A82728)

### Specifications:

|                |   |
|----------------|---|
| Name:          | Anti-SEPT3 Antibody   |
| Description:   | Goat polyclonal antibody to SEPT3.  |
| Applications:  | ELISA, WB, IHC  |
| Reactivity:    | Human   |
| Immunogen:     | Synthetic peptide corresponding to Human SEPT3 (N terminal).  |
| Sequence:      | SELVPEPRPKPA-C  |
| Host:          | Goat  |
| Clonality:     | Polyclonal  |
| Isotype:       | IgG   |
| Conjugate:     | Unconjugated  |
| Purification:  | Purified from goat serum by ammonium sulphate precipitation followed by antigen affinity chromatography using the immunizing peptide. |
| Concentration: | 100 µg at 0.5 mg/ml.  |
| Product Form:  | Liquid  |
| Formulation:   | Supplied in Tris Buffered Saline, pH 7.30, with 0.02% Sodium Azide and 0.5% BSA.  |
| Storage:       | Shipped at 4°C. Upon delivery aliquot and store at -20°C. Avoid freeze / thaw cycles.   |
| Disclaimer:    | This product is for research use only. It is not intended for diagnostic or therapeutic use.  |

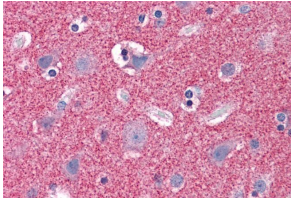
### Images:



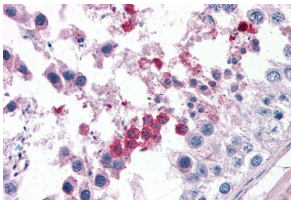
Anti-SEPT3 Antibody (A82728) (3.75µg/ml) staining of paraffin embedded Human Cerebellum. Steamed antigen retrieval with citrate buffer pH 6, AP-staining.

## Anti-SEPT3 Antibody (A82728)

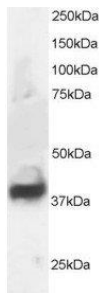
Images continued:



Anti-SEPT3 Antibody (A82728) (3.75 $\mu$ g/ml) staining of paraffin embedded Human Cortex. Steamed antigen retrieval with citrate buffer pH 6, AP-staining.



Anti-SEPT3 Antibody (A82728) (3.75 $\mu$ g/ml) staining of paraffin embedded Human Testis. Steamed antigen retrieval with citrate buffer pH 6, AP-staining.



Anti-SEPT3 Antibody (A82728) staining (1 $\mu$ g/ml) of Human Brain lysate (RIPA buffer, 30 $\mu$ g total protein per lane). Primary incubated for 1 hour. Detected by chemiluminescence.