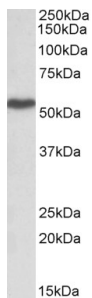


Anti-LSP1 Antibody (A82897)

Specifications:

| | |
|----------------|---------------------------------------------------------------------------------------------------------------------------------------|
| Name: | Anti-LSP1 Antibody |
| Description: | Goat polyclonal antibody to LSP1. |
| Applications: | ELISA, WB |
| Reactivity: | Human |
| Immunogen: | Synthetic peptide corresponding to Human LSP1 (internal region). |
| Sequence: | C-ASTKSRWETGEVQAQ |
| Host: | Goat |
| Clonality: | Polyclonal |
| Isotype: | IgG |
| Conjugate: | Unconjugated |
| Purification: | Purified from goat serum by ammonium sulphate precipitation followed by antigen affinity chromatography using the immunizing peptide. |
| Concentration: | 100 µg at 0.5 mg/ml. |
| Product Form: | Liquid |
| Formulation: | Supplied in Tris Buffered Saline, pH 7.30, with 0.02% Sodium Azide and 0.5% BSA. |
| Storage: | Shipped at 4°C. Upon delivery aliquot and store at -20°C. Avoid freeze / thaw cycles. |
| Disclaimer: | This product is for research use only. It is not intended for diagnostic or therapeutic use. |

Images:



Anti-LSP1 Antibody (A82897) (1 µg/ml) staining of Peripheral Blood Lymphocytes lysate (35 µg protein in RIPA buffer). Primary incubation was 1 hour. Detected by chemiluminescence.