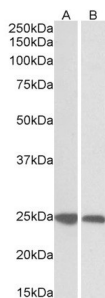


## Anti-GRB2 Antibody (A82905)

### Specifications:

Name:	Anti-GRB2 Antibody
Description:	Goat polyclonal antibody to GRB2.
Applications:	ELISA, WB, IHC
Reactivity:	Human, Mouse, Rat, Porcine
Immunogen:	Synthetic peptide corresponding to Human GRB2 (C terminal).
Sequence:	C-PRNYVTPVNRNV
Host:	Goat
Clonality:	Polyclonal
Isotype:	IgG
Conjugate:	Unconjugated
Purification:	Purified from goat serum by ammonium sulphate precipitation followed by antigen affinity chromatography using the immunizing peptide.
Concentration:	100 µg at 0.5 mg/ml.
Product Form:	Liquid
Formulation:	Supplied in Tris Buffered Saline, pH 7.30, with 0.02% Sodium Azide and 0.5% BSA.
Storage:	Shipped at 4°C. Upon delivery aliquot and store at -20°C. Avoid freeze / thaw cycles.
Disclaimer:	This product is for research use only. It is not intended for diagnostic or therapeutic use.

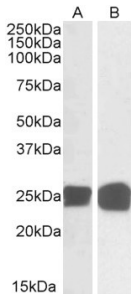
### Images:



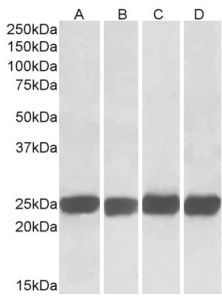
Anti-GRB2 Antibody (A82905) (0.03µg/ml) staining of Human (A) and Pig (B) Spleen lysates (35µg protein in RIPA buffer). Primary incubation was 1 hour. Detected by chemiluminescence.

## Anti-GRB2 Antibody (A82905)

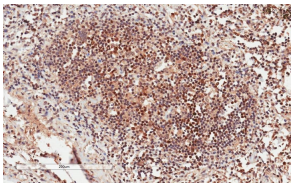
Images continued:



Anti-GRB2 Antibody (A82905) (0.05 $\mu$ g/ml) staining of Human Thymus (A) and Molt4 (B) lysates (35 $\mu$ g total protein in RIPA buffer). Primary incubated for 1 hour. Detected by chemiluminescence.



Anti-GRB2 Antibody (A82905) (0.05 $\mu$ g/ml) staining of Mouse (A+C) and Rat (B+D) Brain (A+B) and Spleen (C+D) lysates (35 $\mu$ g total protein in RIPA buffer). Primary incubated for 1 hour. Detected by western blot using chemiluminescence.



Anti-GRB2 Antibody (A82905) (1 $\mu$ g/ml) staining of paraffin embedded Human Lymph Node. Microwaved antigen retrieval with citrate buffer pH 6, HRP-staining.