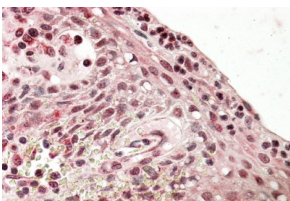


Anti-PRDM1 Antibody (A82932)

Specifications:

Name:	Anti-PRDM1 Antibody
Description:	Goat polyclonal antibody to PRDM1.
Applications:	ELISA, WB, IF, FC
Reactivity:	Human
Immunogen:	Synthetic peptide corresponding to Human PRDM1 (internal region).
Sequence:	C-DISDNADRLEDVED
Host:	Goat
Clonality:	Polyclonal
Isotype:	IgG
Conjugate:	Unconjugated
Purification:	Purified from goat serum by ammonium sulphate precipitation followed by antigen affinity chromatography using the immunizing peptide.
Concentration:	100 µg at 0.5 mg/ml.
Product Form:	Liquid
Formulation:	Supplied in Tris Buffered Saline, pH 7.30, with 0.02% Sodium Azide and 0.5% BSA.
Storage:	Shipped at 4°C. Upon delivery aliquot and store at -20°C. Avoid freeze / thaw cycles.
Disclaimer:	This product is for research use only. It is not intended for diagnostic or therapeutic use.

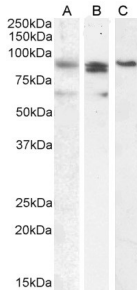
Images:



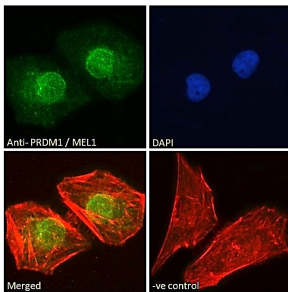
Anti-PRDM1 Antibody (A82932) (3.8µg/ml) staining of paraffin embedded Human Tonsil. Steamed antigen retrieval with citrate buffer pH 6, AP-staining.

Anti-PRDM1 Antibody (A82932)

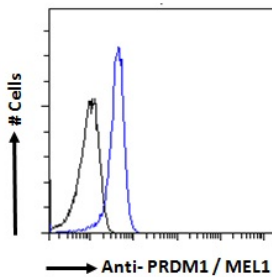
Images continued:



Anti-PRDM1 Antibody (A82932) (0.1µg/ml) staining of A431 (A), (2µg/ml) K562 (B) and (1µg/ml) Nuclear K562 (C) cell lysate (35µg protein in RIPA buffer). Detected by chemiluminescence.



Anti-PRDM1 Antibody (A82932) - Immunofluorescence analysis of paraformaldehyde fixed HeLa cells, permeabilized with 0.15% Triton. Primary incubation 1hr (10µg/ml) followed by Alexa Fluor 488 secondary antibody (2µg/ml), showing nuclear staining.



Anti-PRDM1 Antibody (A82932) - Flow cytometric analysis of paraformaldehyde fixed A431 cells (blue line), permeabilized with 0.5% Triton. Primary incubation 1hr (10µg/ml) followed by Alexa Fluor 488 secondary antibody (1µg/ml). IgG control: Unimmunized goat IgG (black line) followed by Alexa Fluor 488 secondary antibody.