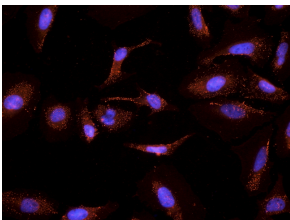


Anti-CYP26A1 Antibody (A82975)

Specifications:

| | |
|----------------|---|
| Name: | Anti-CYP26A1 Antibody |
| Description: | Goat polyclonal antibody to CYP26A1. |
| Applications: | ELISA, IHC, ICC |
| Reactivity: | Human |
| Immunogen: | Synthetic peptide corresponding to Human CYP26A1 (internal region). |
| Sequence: | C-NLPARFTHFHGE |
| Host: | Goat |
| Clonality: | Polyclonal |
| Isotype: | IgG |
| Conjugate: | Unconjugated |
| Purification: | Purified from goat serum by ammonium sulphate precipitation followed by antigen affinity chromatography using the immunizing peptide. |
| Concentration: | 100 µg at 0.5 mg/ml. |
| Product Form: | Liquid |
| Formulation: | Supplied in Tris Buffered Saline, pH 7.30, with 0.02% Sodium Azide and 0.5% BSA. |
| Storage: | Shipped at 4°C. Upon delivery aliquot and store at -20°C. Avoid freeze / thaw cycles. |
| Disclaimer: | This product is for research use only. It is not intended for diagnostic or therapeutic use. |

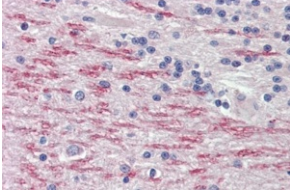
Images:



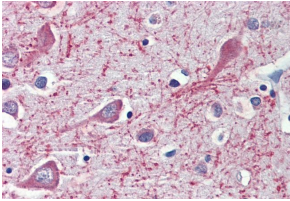
Anti-CYP26A1 Antibody (A82975) (2.5µg/ml) staining of PFA-fixed and TX100-treated HeLa cells after primary labelling overnight at 4C with DAPI nuclear counterstaining in blue.

Anti-CYP26A1 Antibody (A82975)

Images continued:



Anti-CYP26A1 Antibody (A82975) (3.75 μ g/ml) staining of paraffin embedded Human Cerebellum. Steamed antigen retrieval with citrate buffer pH 6, AP-staining.



Anti-CYP26A1 Antibody (A82975) (3.75 μ g/ml) staining of paraffin embedded Human Cortex. Steamed antigen retrieval with citrate buffer pH 6, AP-staining.