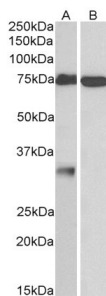


## Anti-GPM6A Antibody (A83084)

### Specifications:

Name:	Anti-GPM6A Antibody
Description:	Goat polyclonal antibody to GPM6A.
Applications:	ELISA, WB
Reactivity:	Human, Mouse, Rat
Immunogen:	Synthetic peptide corresponding to Human GPM6A (internal region).
Sequence:	C-QTYFEMARTAGD
Host:	Goat
Clonality:	Polyclonal
Isotype:	IgG
Conjugate:	Unconjugated
Purification:	Purified from goat serum by ammonium sulphate precipitation followed by antigen affinity chromatography using the immunizing peptide.
Concentration:	100 µg at 0.5 mg/ml.
Product Form:	Liquid
Formulation:	Supplied in Tris Buffered Saline, pH 7.30, with 0.02% Sodium Azide and 0.5% BSA.
Storage:	Shipped at 4°C. Upon delivery aliquot and store at -20°C. Avoid freeze / thaw cycles.
Disclaimer:	This product is for research use only. It is not intended for diagnostic or therapeutic use.

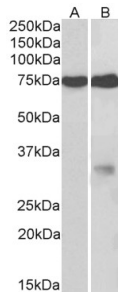
### Images:



Anti-GPM6A Antibody (A83084) (1µg/ml) staining of Human Cerebellum (A) and Olfactory Bulb (B) lysates (35µg protein in RIPA buffer). Primary incubation was 1 hour. Detected by chemiluminescence.

## Anti-GPM6A Antibody (A83084)

Images continued:



Anti-GPM6A Antibody (A83084) (2 $\mu$ g/ml) staining of fetal Mouse (A) and Rat (B) Brain lysates (35 $\mu$ g protein in RIPA buffer). Primary incubation was 1 hour. Detected by chemiluminescence.