

Anti-ESRRG Antibody (A83163)

Specifications:

Name:	Anti-ESRRG Antibody
Description:	Goat polyclonal antibody to ESRRG.
Applications:	ELISA, WB
Reactivity:	Human
Immunogen:	Synthetic peptide corresponding to Human ESRRG (internal region).
Sequence:	CRMSNKDRHIDS
Host:	Goat
Clonality:	Polyclonal
Isotype:	IgG
Conjugate:	Unconjugated
Purification:	Purified from goat serum by ammonium sulphate precipitation followed by antigen affinity chromatography using the immunizing peptide.
Concentration:	100 µg at 0.5 mg/ml.
Product Form:	Liquid
Formulation:	Supplied in Tris Buffered Saline, pH 7.30, with 0.02% Sodium Azide and 0.5% BSA.
Storage:	Shipped at 4°C. Upon delivery aliquot and store at -20°C. Avoid freeze / thaw cycles.
Disclaimer:	This product is for research use only. It is not intended for diagnostic or therapeutic use.

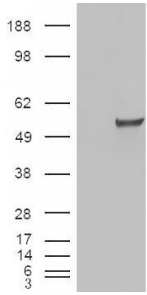
Images:



Anti-ESRRG Antibody (A83163) (0.2µg/ml) staining of Human Breast lysate (35µg protein in RIPA buffer). Primary incubation was 1 hour. Detected by chemiluminescence.

Anti-ESRRG Antibody (A83163)

Images continued:



HEK293 overexpressing ESRRG (RC218233) and probed with Anti-ESRRG Antibody (A83163) (mock transfection in first lane), tested by Origene.