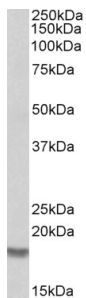


Anti-Cofilin 2 Antibody (A83312)

Specifications:

| | |
|----------------|---|
| Name: | Anti-Cofilin 2 Antibody |
| Description: | Goat polyclonal antibody to Cofilin 2. |
| Applications: | ELISA, WB, IHC |
| Reactivity: | Human, Rat |
| Immunogen: | Synthetic peptide corresponding to Human CFL2 (C terminal). |
| Sequence: | C-DIKDRSTLGEK |
| Host: | Goat |
| Clonality: | Polyclonal |
| Isotype: | IgG |
| Conjugate: | Unconjugated |
| Purification: | Purified from goat serum by ammonium sulphate precipitation followed by antigen affinity chromatography using the immunizing peptide. |
| Concentration: | 100 µg at 0.5 mg/ml. |
| Product Form: | Liquid |
| Formulation: | Supplied in Tris Buffered Saline, pH 7.30, with 0.02% Sodium Azide and 0.5% BSA. |
| Storage: | Shipped at 4°C. Upon delivery aliquot and store at -20°C. Avoid freeze / thaw cycles. |
| Disclaimer: | This product is for research use only. It is not intended for diagnostic or therapeutic use. |

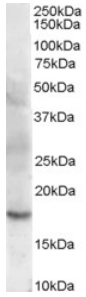
Images:



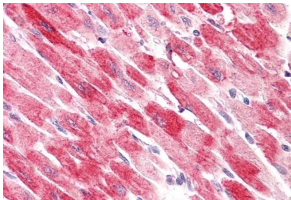
Anti-CFL2 Antibody (A83312) (0.001µg/ml) staining of Rat Skeletal Muscle lysate (35µg protein in RIPA buffer). Primary incubation was 1 hour. Detected by chemiluminescence.

Anti-Cofilin 2 Antibody (A83312)

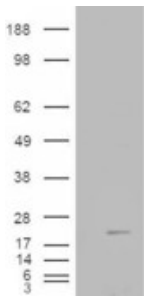
Images continued:



Anti-CFL2 Antibody (A83312) (0.003 μ g/ml) staining of Human Skeletal Muscle lysate (35 μ g protein in RIPA buffer). Primary incubation was 1 hour. Detected by chemiluminescence.



Anti-CFL2 Antibody (A83312) (3.75 μ g/ml) staining of paraffin embedded Human Heart. Steamed antigen retrieval with citrate buffer pH 6, AP-staining.



HEK293 overexpressing Human Muscle Cofilin 2 (RC222215) and probed with Anti-CFL2 Antibody (A83312) (mock transfection in first lane), tested by Origene.