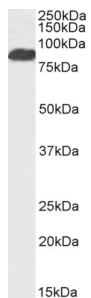


Anti-FOXP2 Antibody (A83417)

Specifications:

| | |
|----------------|---|
| Name: | Anti-FOXP2 Antibody |
| Description: | Goat polyclonal antibody to FOXP2. |
| Applications: | ELISA, WB, IHC |
| Reactivity: | Human |
| Immunogen: | Synthetic peptide corresponding to Human FOXP2 (C terminal). |
| Sequence: | C-REIEEEPLSEDLE |
| Host: | Goat |
| Clonality: | Polyclonal |
| Isotype: | IgG |
| Conjugate: | Unconjugated |
| Purification: | Purified from goat serum by ammonium sulphate precipitation followed by antigen affinity chromatography using the immunizing peptide. |
| Concentration: | 100 µg at 0.5 mg/ml. |
| Product Form: | Liquid |
| Formulation: | Supplied in Tris Buffered Saline, pH 7.30, with 0.02% Sodium Azide and 0.5% BSA. |
| Storage: | Shipped at 4°C. Upon delivery aliquot and store at -20°C. Avoid freeze / thaw cycles. |
| Disclaimer: | This product is for research use only. It is not intended for diagnostic or therapeutic use. |

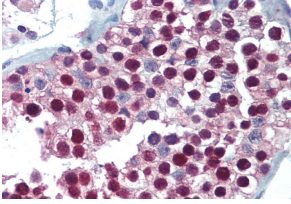
Images:



Anti-FOXP2 Antibody (A83417) (2µg/ml) staining of Human Cerebellum lysate (35µg protein in RIPA buffer). Detected by chemiluminescence.

Anti-FOXP2 Antibody (A83417)

Images continued:



Anti-FOXP2 Antibody (A83417) (5 μ g/ml) staining of paraffin embedded Human Testis. Steamed antigen retrieval with citrate buffer pH 6, AP-staining.