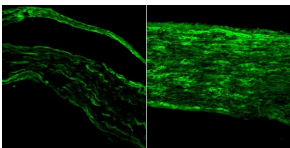


Anti-BDNF Antibody (A83462)

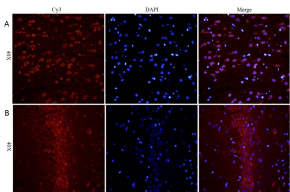
Specifications:

Name:	Anti-BDNF Antibody
Description:	Goat polyclonal antibody to BDNF .
Applications:	ELISA, IHC, IF
Reactivity:	Human, Mouse, Rat
Immunogen:	Synthetic peptide corresponding to Human BDNF (internal region).
Sequence:	ETKCNPMGYTKE
Host:	Goat
Clonality:	Polyclonal
Isotype:	IgG
Conjugate:	Unconjugated
Purification:	Purified from goat serum by ammonium sulphate precipitation followed by antigen affinity chromatography using the immunizing peptide.
Concentration:	100 µg at 0.5 mg/ml.
Product Form:	Liquid
Formulation:	Supplied in Tris Buffered Saline, pH 7.30, with 0.02% Sodium Azide and 0.5% BSA.
Storage:	Shipped at 4°C. Upon delivery aliquot and store at -20°C. Avoid freeze / thaw cycles.
Disclaimer:	This product is for research use only. It is not intended for diagnostic or therapeutic use.

Images:



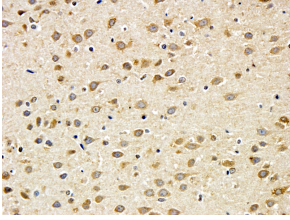
Anti-BDNF Antibody (A83462) (1µg/ml) staining of PFA-perfused cryosection of Mouse sciatic nerve (left) and injured sciatic nerve (right). Alexa 488-staining.



Anti-BDNF Antibody (A83462) (5µg/ml) staining of paraffin embedded Rat Cerebral Cortex (A) and Rat Hippocampus (B), CRY-staining with DAPI nuclear counter stain in blue. Antigen retrieval with citrate buffer pH 6 at 95-98C.

Anti-BDNF Antibody (A83462)

Images continued:



Anti-BDNF Antibody (A83462) (5 μ g/ml) staining of paraffin embedded Rat Cerebral Cortex. Antigen retrieval with citrate buffer pH 6 at 95-98C, DAB-staining.