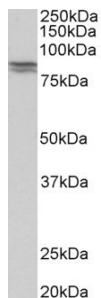


Anti-E Cadherin Antibody (A83532)

Specifications:

Name:	Anti-E Cadherin Antibody
Description:	Goat polyclonal antibody to E Cadherin.
Applications:	ELISA, WB, IHC
Reactivity:	Human, Mouse, Rat, Porcine
Immunogen:	Synthetic peptide corresponding to Human CDH1 (internal region).
Sequence:	C-DYKINLKLMDNQNK
Host:	Goat
Clonality:	Polyclonal
Isotype:	IgG
Conjugate:	Unconjugated
Purification:	Purified from goat serum by ammonium sulphate precipitation followed by antigen affinity chromatography using the immunizing peptide.
Concentration:	100 µg at 0.5 mg/ml.
Product Form:	Liquid
Formulation:	Supplied in Tris Buffered Saline, pH 7.30, with 0.02% Sodium Azide and 0.5% BSA.
Storage:	Shipped at 4°C. Upon delivery aliquot and store at -20°C. Avoid freeze / thaw cycles.
Disclaimer:	This product is for research use only. It is not intended for diagnostic or therapeutic use.

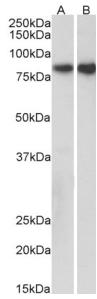
Images:



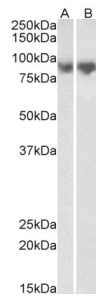
Anti-E Cadherin Antibody (A83532) (0.5µg/ml) staining of Human Kidney lysate (35µg protein in RIPA buffer). Detected by chemiluminescence.

Anti-E Cadherin Antibody (A83532)

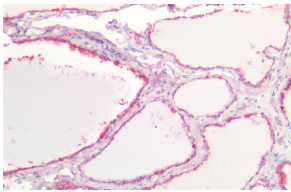
Images continued:



Anti-E Cadherin Antibody (A83532) (0.3 μ g/ml) staining of Pig Kidney (A) and Colon (B) lysates (35 μ g protein in RIPA buffer). Detected by chemiluminescence.



Anti-E Cadherin Antibody (A83532) (0.3 μ g/ml) staining of Mouse Lung (A) and Rat Lung (B) lysates (35 μ g protein in RIPA buffer). Detected by chemiluminescence.



Anti-E Cadherin Antibody (A83532) (5 μ g/ml) staining of paraffin embedded Human Thyroid. Steamed antigen retrieval with citrate buffer pH 6, AP-staining.